

AUBURN LIBRARY

King County Library System
Auburn, Washington

REGISTERED
ARCHITECT
STATE OF WASHINGTON

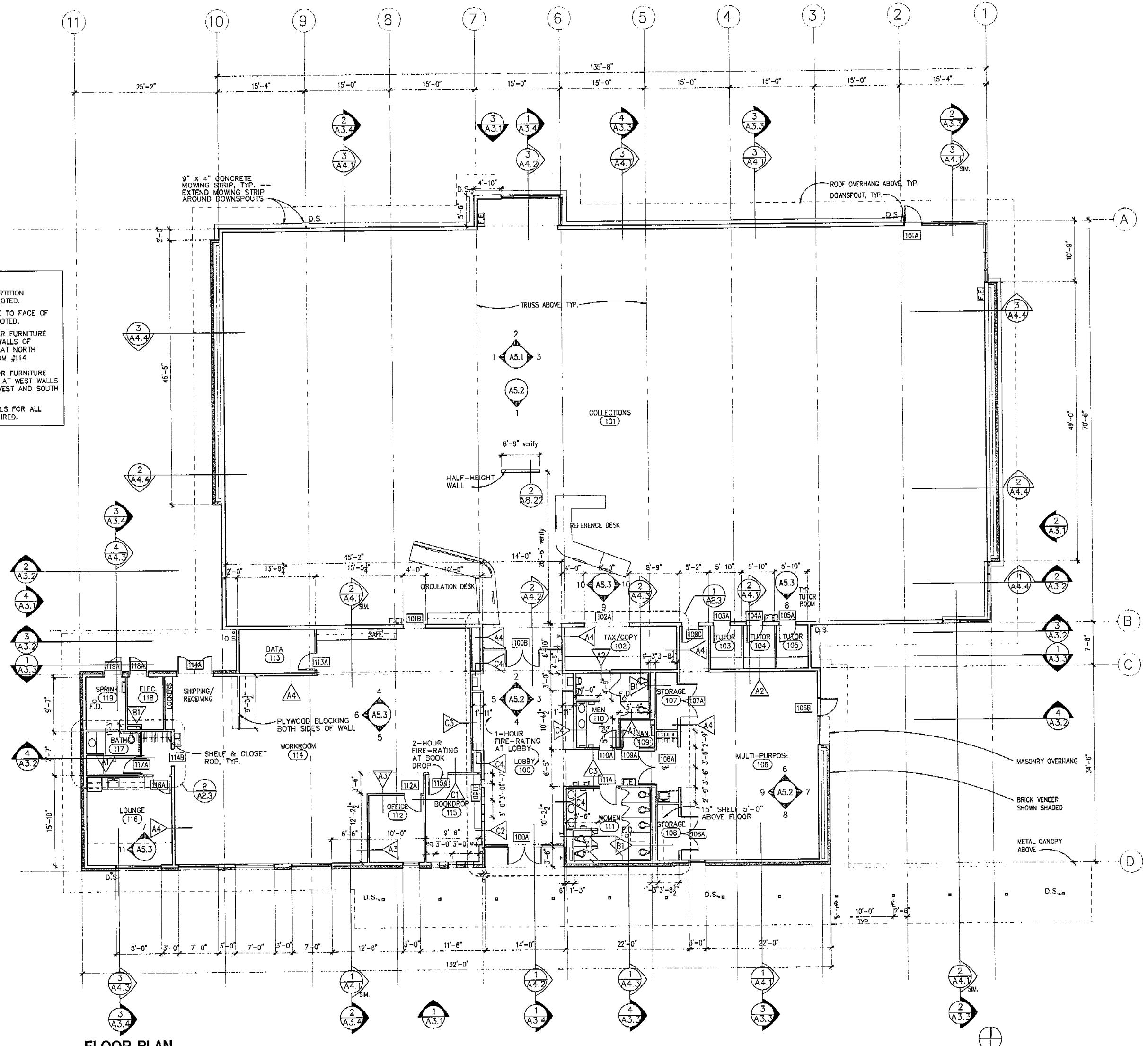
Principal Architect RS
Project Manager MS
Job Captain EC
Drawn By EC/KK/JM
Checked By BB
Job No. 97005
Date 1/11/99

Revisions:
No. Date By

**BID SET
CONSTRUCTION
DOCUMENTS**
JANUARY 11, 1999

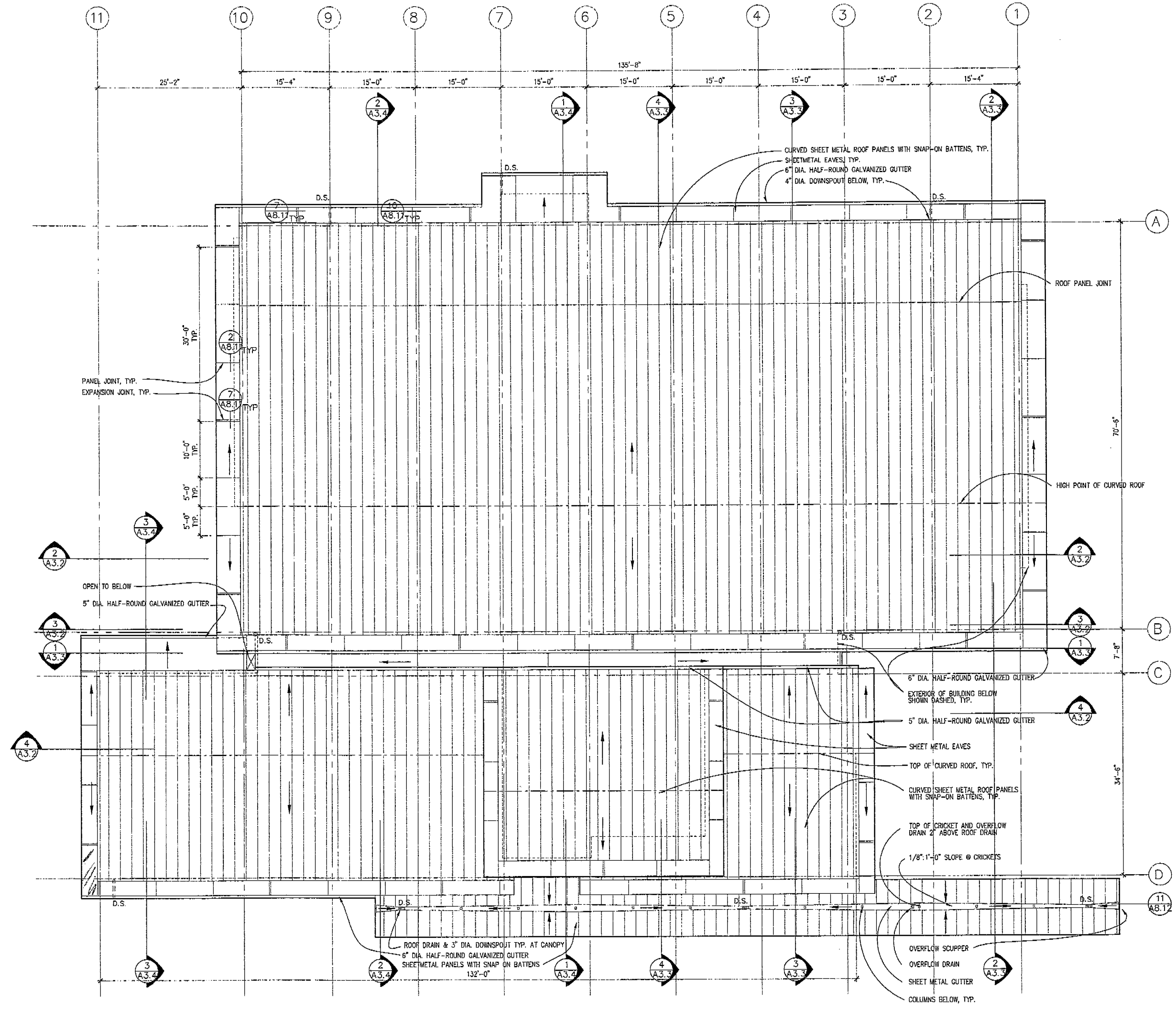
FLOOR PLAN
SCALE: 1/8" = 1'-0"
A 2.1

- NOTES:
1. INTERIOR WALLS TO BE PARTITION TYPE A3 UNLESS OTHERWISE NOTED.
 2. DIMENSIONS INDICATED ARE TO FACE OF FRAMING UNLESS OTHERWISE NOTED.
 3. PROVIDE 2X4 BLOCKING FOR FURNITURE FIXING AT 72" A.F.F. AT ALL WALLS OF COLLECTIONS ROOM #101 AND AT NORTH AND EAST WALLS OF WORKROOM #114.
 4. PROVIDE 2X4 BLOCKING FOR FURNITURE FIXING AT 60" AND 78" A.F.F. AT WEST WALLS OF WORKROOM #114 AND AT WEST AND SOUTH WALLS OF OFFICE #112.
 5. PROVIDE BLOCKING IN WALLS FOR ALL SHEATHING AND CWB AS REQUIRED.



FLOOR PLAN
1

AUBURN LIBRARY
King County Library System
Auburn, Washington



1 ROOF PLAN
SCALE 1/8" = 1'-0"

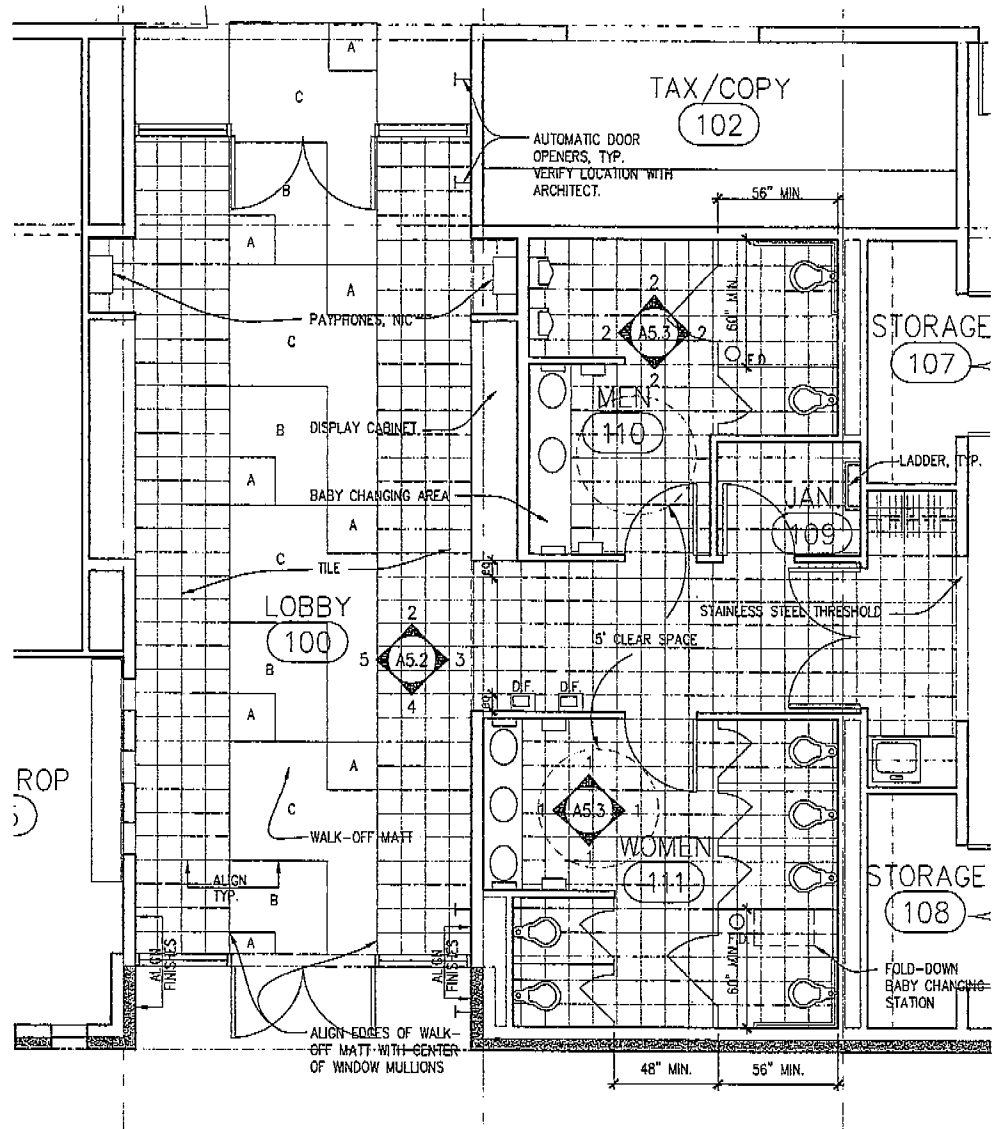
REGISTERED ARCHITECT
STATE OF WASHINGTON

Principal Architect RS
Project Manager MS
Job Captain EC
Drawn By EC/KK/JM
Checked By BB
Job No. 97005
Date 1/11/99

Revisions:
No. Date By

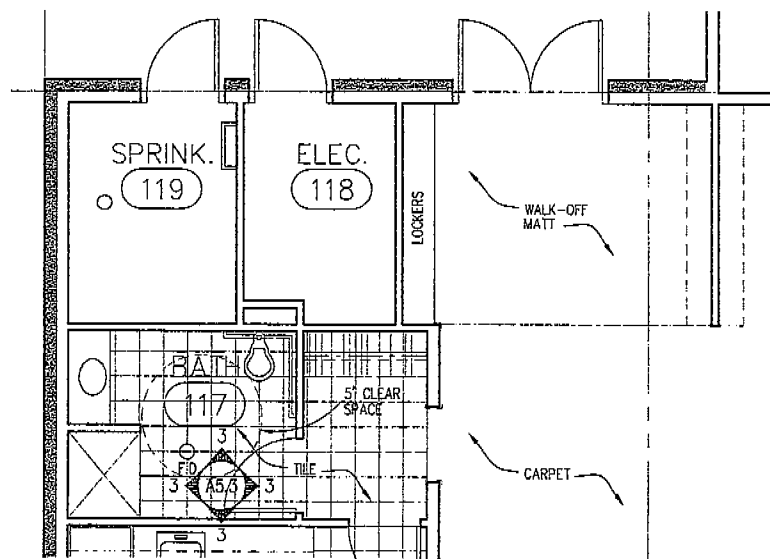
**BID SET
CONSTRUCTION
DOCUMENTS**
JANUARY 11, 1999

ROOF PLAN
SCALE: 1/8" = 1'-0"
A 2.2

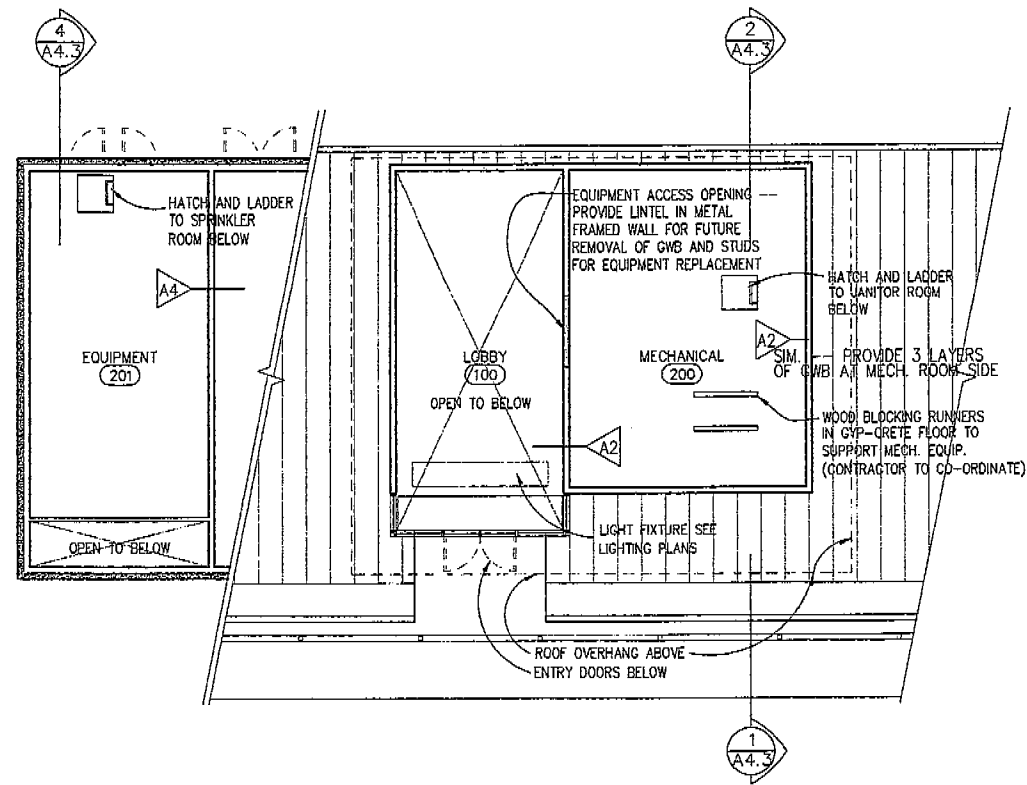


1 LOBBY/RESTROOM PLAN
SCALE 1/4" = 1'-0"

NOTE:
SEE SHT. A5.1 FOR ADDITIONAL
TOILET ROOM INFORMATION/DIMENSIONS



2 STAFF BATHROOM PLAN
SCALE 1/4" = 1'-0"



3 ATTIC PLAN
SCALE 1/8" = 1'-0"

AUBURN LIBRARY
King County Library System
Auburn, Washington

REGISTERED
ARCHITECT

STATE OF WASHINGTON

Principal Architect RS
Project Manager MS
Job Captain EC
Drawn By EC/KK/JM
Checked By BB
Job No. 97005
Date 1/11/99

Revisions:

No. Date By

**BID SET
CONSTRUCTION
DOCUMENTS**

JANUARY 11, 1999

ATTIC &
DETAIL
PLANS
SCALE: 1/4" = 1'-0"

A 2.3

AUBURN LIBRARY

Auburn, Washington

Principal Architect: RS
Project Manager: MS
Job Captain: EC
Drawn By: PHL
Checked By: _____
Job No.: 97005
Date: 11 JAN 99

Revisions:

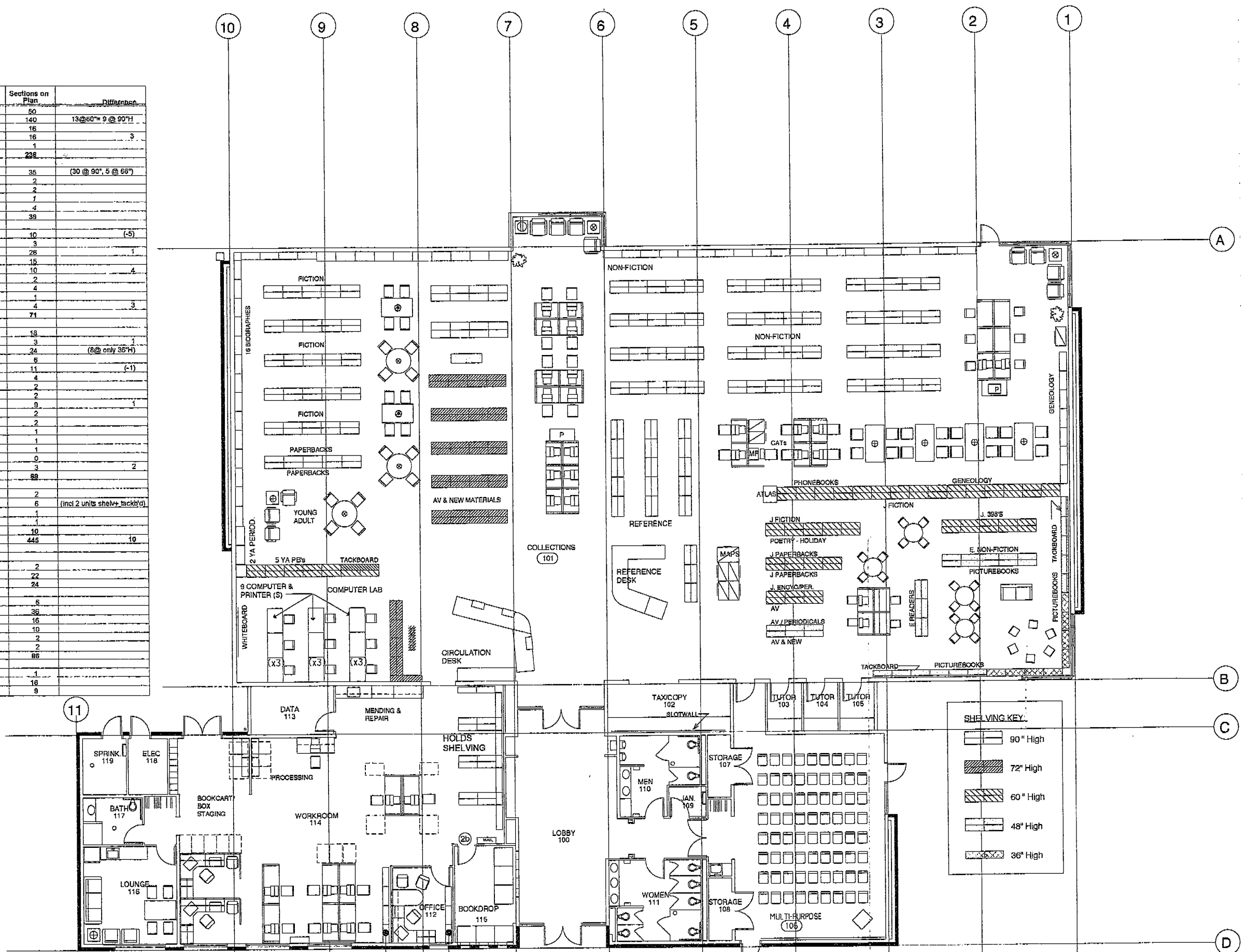
No. Date By

CD
BID DOCUMENTS

FURNITURE & SHELVING PLAN

A 2.4

Collection Type	Stack Ht. Inches	Sections Req'd	Sections on Plan	Differences
Adult Fiction	90	50	50	
Non-Fiction (Adult YA & Juvenile)	90	130	140	13 @ 60" = 9 @ 90"
70's (Adult YA & J)	90	18	18	
Biography (Adult YA & J)	90	13	16	3
Oversize (Adult YA & J)	90	1	1	
Total Adult		210	238	
Reference, special collections	90	35	35	(30 @ 90", 5 @ 66")
Documents	90	2	2	
Microform Lateral File Cabt	56	2	2	
Map File Cabt	36	7	7	
Four Drawer Lateral File Cabt	48	4	4	
Total Ref/Docs Sections		37	39	
Adult Paperback	90	14	10	(-5)
Large Print	72	3	3	
Adult Periodicals/Newspapers	90	26	28	1
Adult YA/Video	72	15	15	
Adult Spoken Audio	72	6	10	4
Adult/YA Music Audio Cassettes	72	2	2	
Adult/YA Music CD's	72	4	4	
Circulating CD-ROMS	72	1	1	
Adult/YA New Materials	72	1	4	3
Total Popular		71	71	
Juvenile Fiction	60	18	18	
Holiday	60	2	3	1
Picture Books	42	20	24	(@ 2 only 36")
Easy Readers	42	6	6	
Easy Non-Fiction	42	12	11	(-1)
J 39's	60	4	4	
J Poetry	60	2	2	
J Encyclopedias	60	2	2	
J Paperbacks	60	8	9	1
J Periodicals	60	2	2	
J Video	60	2	2	
J Spoken Audio	60	1	1	
J Kits	60	1	1	
J Music Cassette	60	1	1	
J Music CD's	60	0	0	
J New Material	60	1	3	2
Total Juvenile		82	89	
YA Fiction	90	2	2	
YA Paperbacks	72	6	6	(incl 2 units shelv+ tackbrd)
YA Spoken Audio	72	1	1	
YA Periodicals	90	1	1	
Total YA		10	10	
Total Sections (Sides)		410	445	10
Public Access Cats- Children			2	
Public Access Cats- Adult			22	
Total CPAC's			24	
Carrels (incl 2 child)			6	
Table Seating - Adult			36	
Table Seating - Children			16	
Lounge Seating - Adult			10	
Lounge Seating - YA			2	
Sofa Seating - Children			2	
Total Seating			88	
MF Reader/Printers			1	
SLICKS and Misc. Shelves @ Lab			16	
Computer Lab Stations			9	



Design Perspectives
PROGRAMMING SPACE PLANNING INTERIOR DESIGN
911 Western Avenue 420 Maritime Building Seattle, WA 98104
Phone 206 447 6963 Fax 206 442 9128
www.sapeplans.com

AUBURN LIBRARY

King County Library System
Auburn, Washington

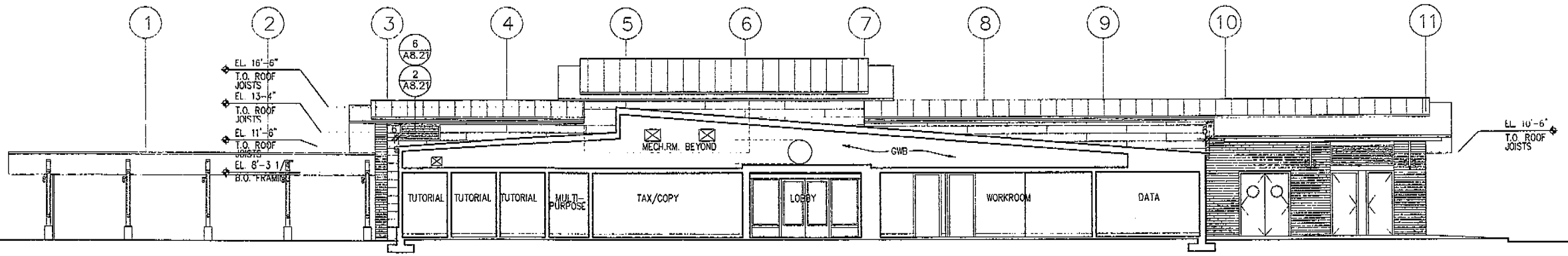
2030 REGISTERED ARCHITECT
STATE OF WASHINGTON

Principal Architect: RS
Project Manager: MS
Job Captain: EC
Drawn By: EC/KK/JM
Checked By: BB
Job No.: 97005
Date: 1/11/99

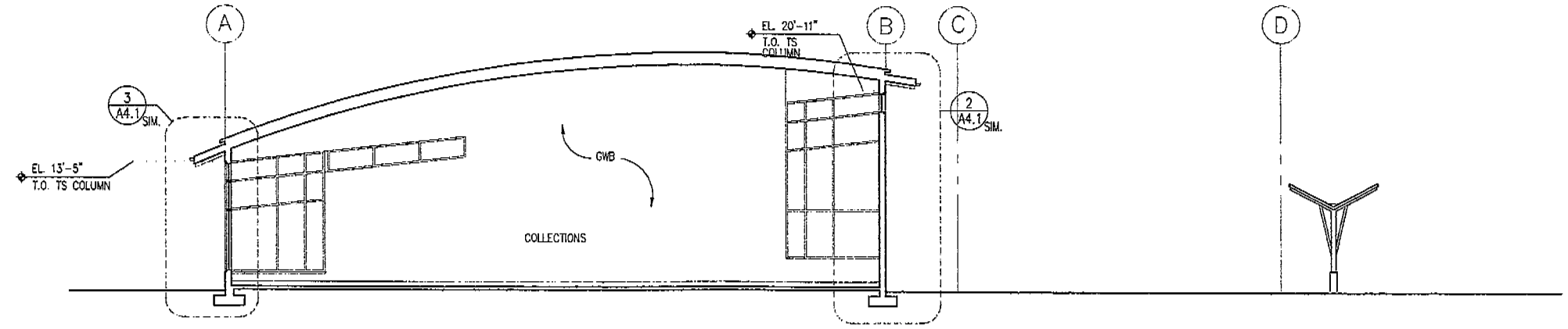
Revisions:
No. Date By

**BID SET
CONSTRUCTION
DOCUMENTS**
JANUARY 11, 1999

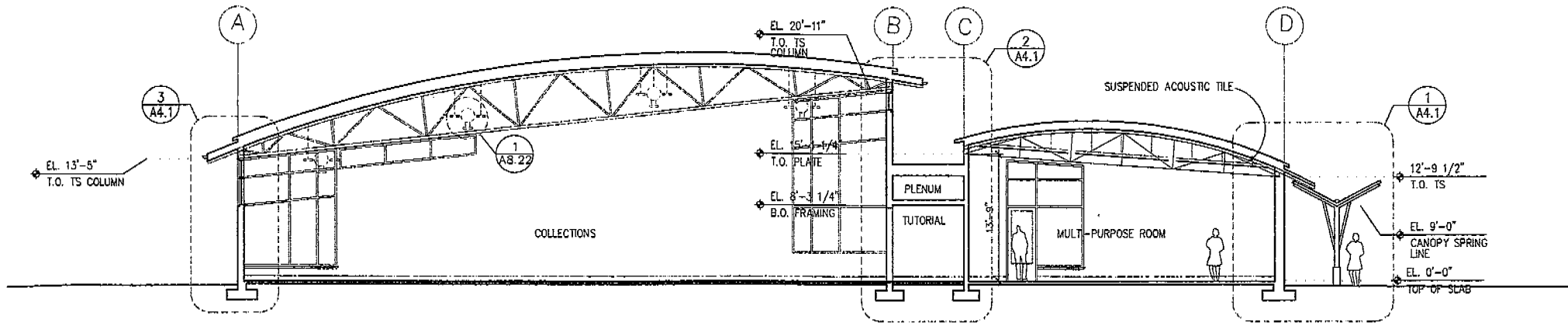
SECTIONS
SCALE: 1/8" = 1'-0"
A 3.3



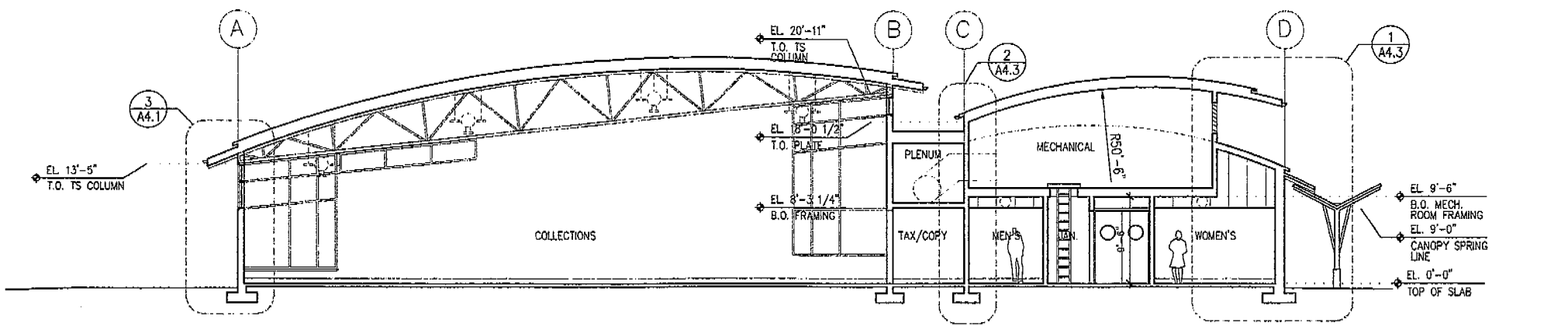
1 SECTION THROUGH MIDDLE - LOOKING SOUTH
Scale: 1/8" = 1'-0"



2 SECTION - LOOKING EAST
Scale: 1/8" = 1'-0"



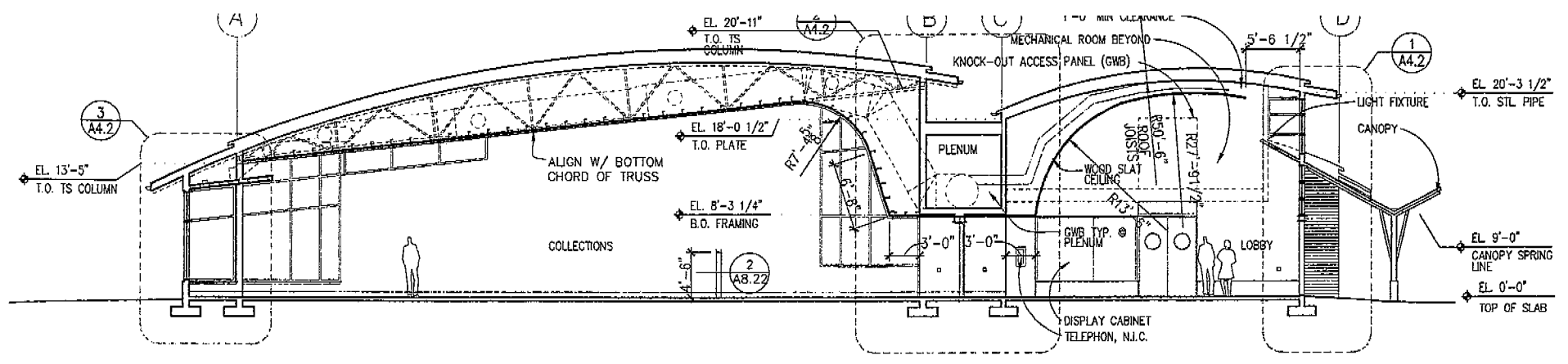
3 SECTION
Scale: 1/8" = 1'-0"



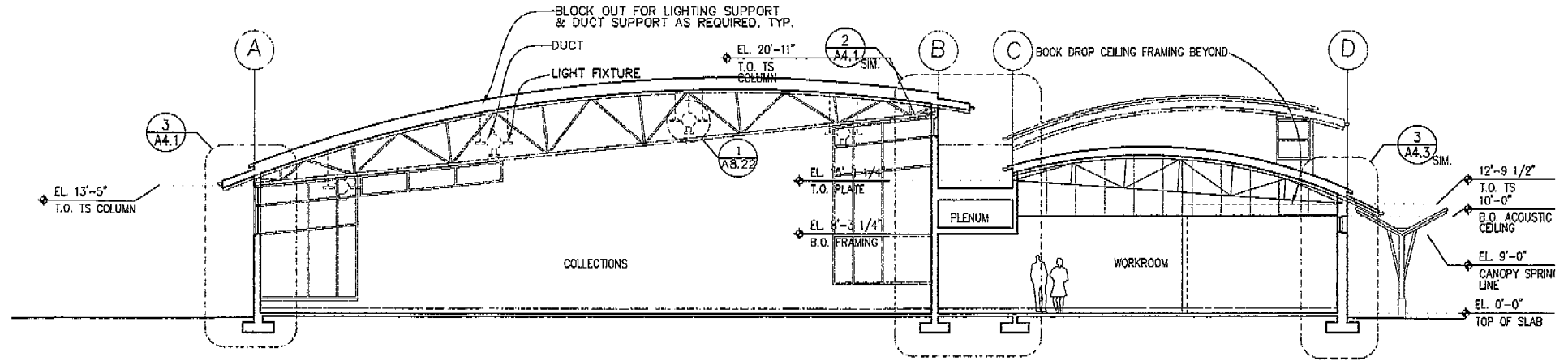
4 SECTION
Scale: 1/8" = 1'-0"

AUBURN LIBRARY

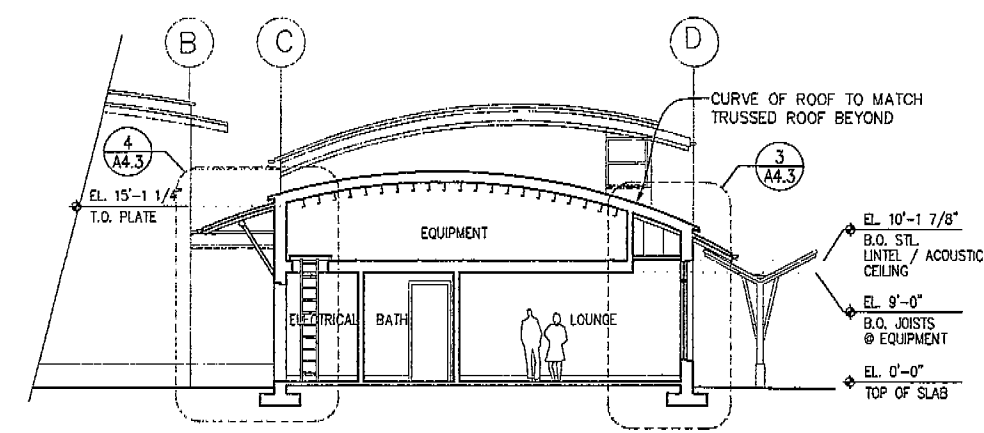
King County Library System
Auburn, Washington



1 SECTION
Scale: 1/8" = 1'-0"



2 SECTION
Scale: 1/8" = 1'-0"



3 SECTION @ LOUNGE
Scale: 1/8" = 1'-0"

2000 REGISTERED ARCHITECT
STATE OF WASHINGTON

Principal Architect RS
Project Manager MS
Job Captain EC
Drawn By EC/KK/JM
Checked By BB
Job No. 97005
Date 1/11/99

Revisions:
No. Date By

**BID SET
CONSTRUCTION
DOCUMENTS**
JANUARY 11, 1999

SECTIONS
SCALE: 1/8" = 1'-0"
A 3.4