

AUBURN LIBRARY
King County Library System
Auburn, Washington

REGISTERED
ARCHITECT

STATE OF WASHINGTON

Principal Architect RS
Project Manager MS
Job Captain EC
Drawn By EC/KK/JM
Checked By BB
Job No. 97005
Date 1/11/99

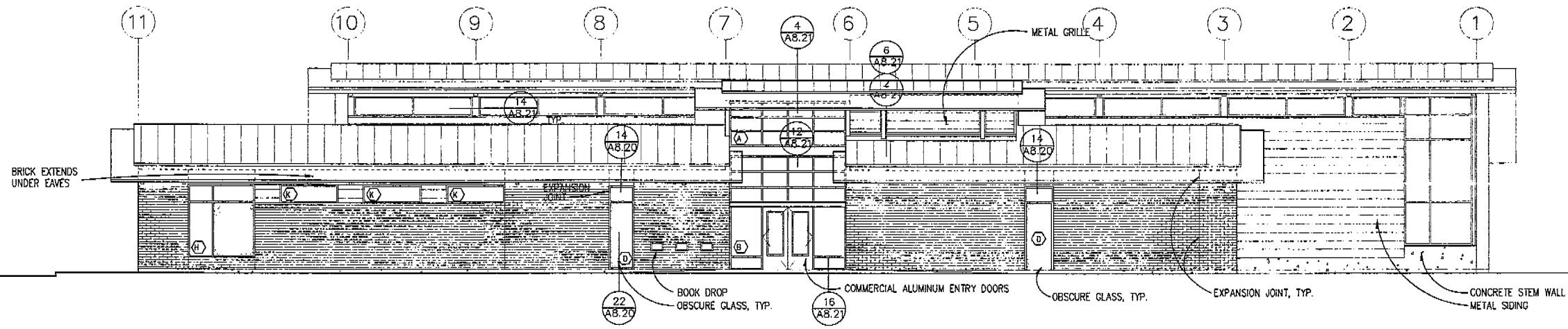
Revisions:

No. Date By

**BID SET
CONSTRUCTION
DOCUMENTS**
JANUARY 11, 1999

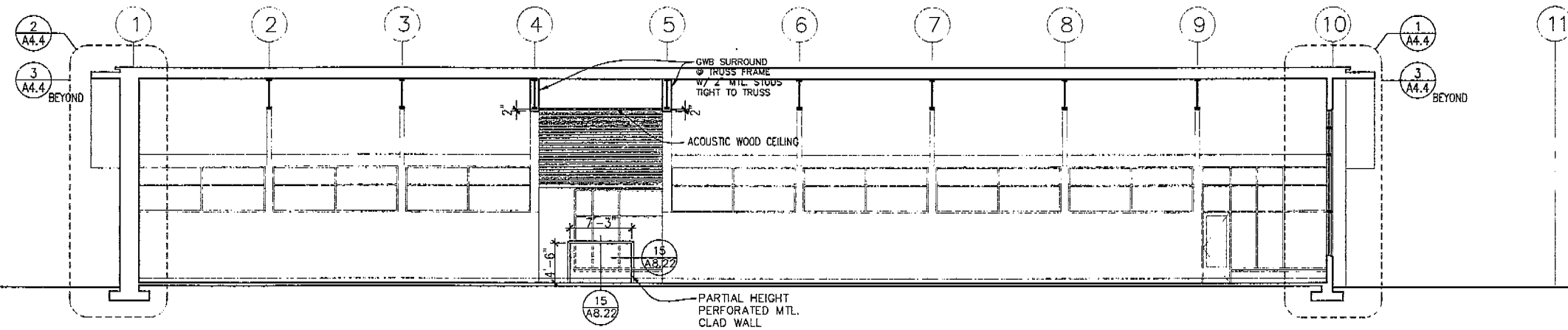
**EXTERIOR
ELEVATIONS/
SECTIONS**
SCALE: 1/8" = 1'-0"

A 3.2



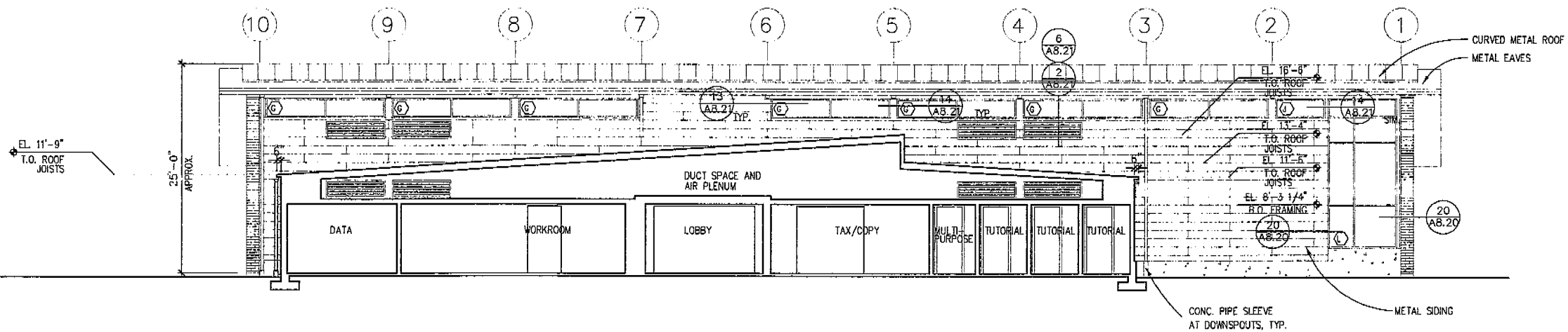
1 SOUTH ELEVATION - CANOPY REMOVED FOR CLARITY

Scale: 1/8" = 1'-0"



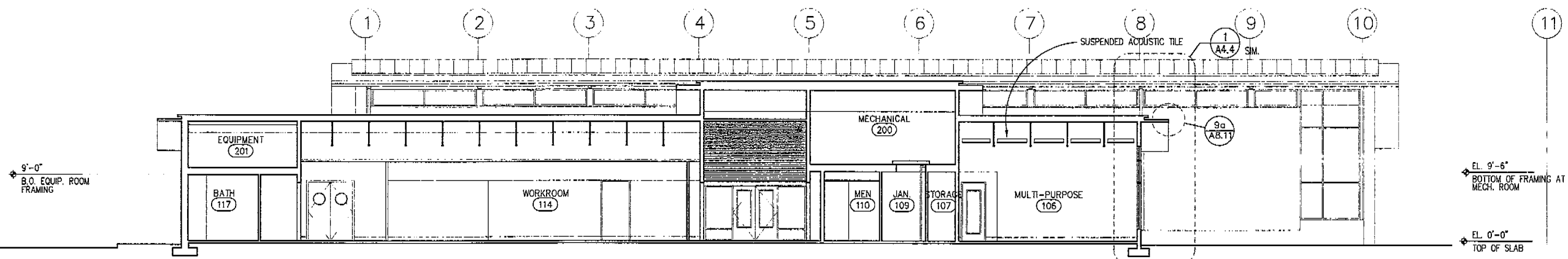
2 SECTION THROUGH COLLECTIONS - LOOKING NORTH

Scale: 1/8" = 1'-0"



3 SECTION THROUGH MIDDLE - LOOKING NORTH

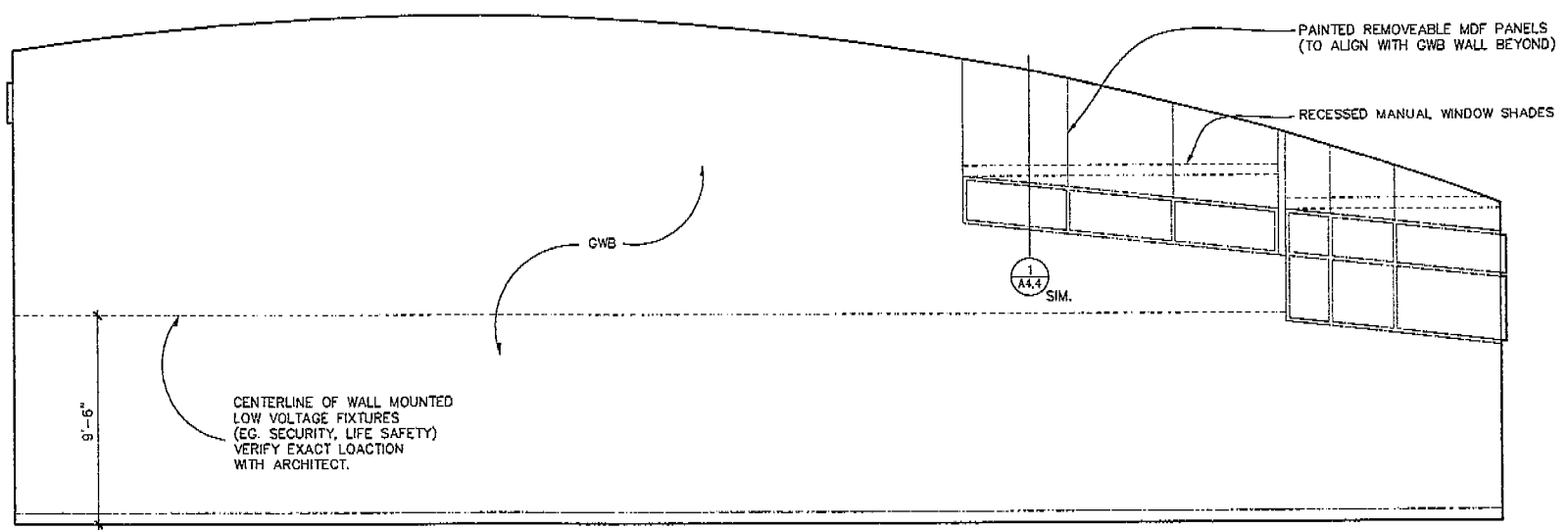
Scale: 1/8" = 1'-0"



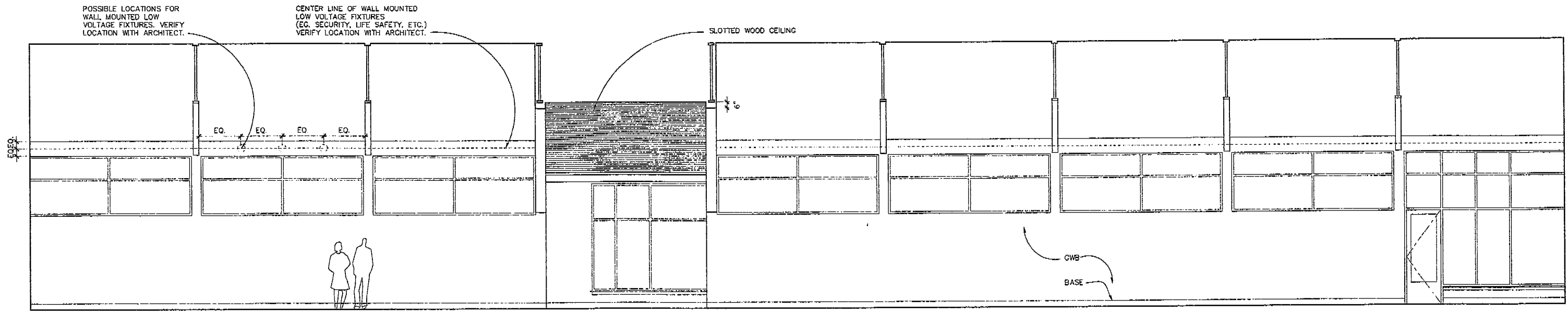
4 SECTION THROUGH WORKROOM/LOBBY/MULTI-PURPOSE - LOOKING NORTH

Scale: 1/8" = 1'-0"

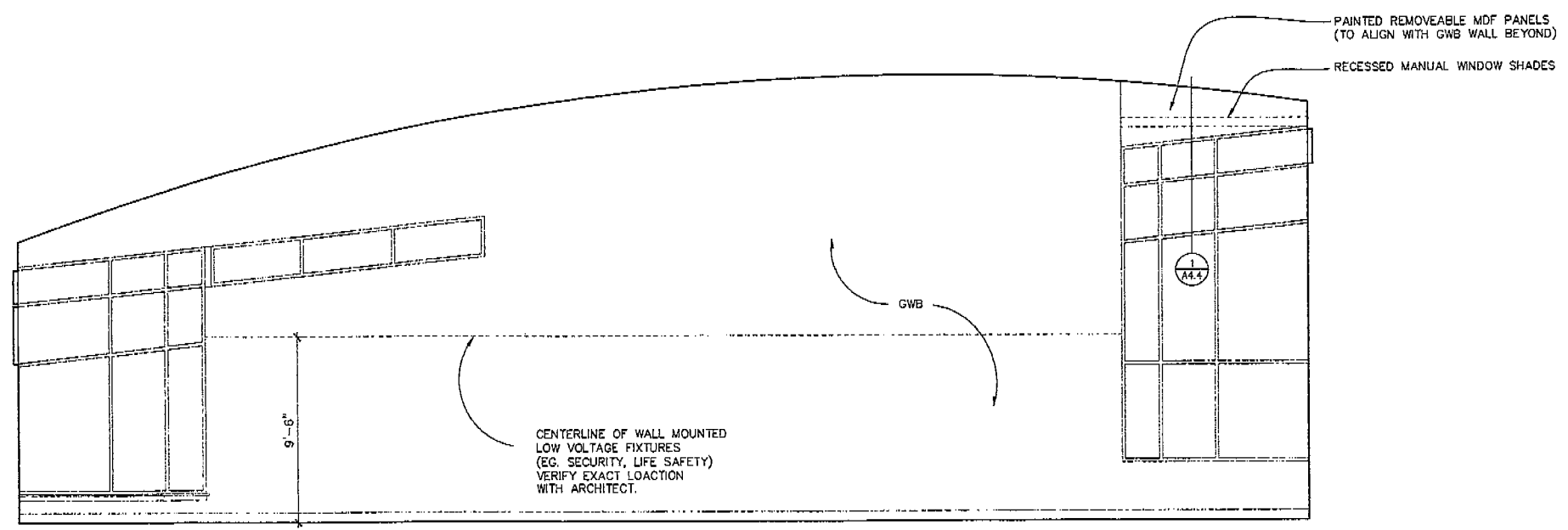
AUBURN LIBRARY
King County Library System
Auburn, Washington



1 COLLECTIONS-WEST
Scale: N.T.S.



2 COLLECTIONS-NORTH
Scale: N.T.S.



3 COLLECTIONS-EAST
Scale: N.T.S.

2000 REGISTERED ARCHITECT
STATE OF WASHINGTON

Principal Architect RS
Project Manager MS
Job Captain EC
Drawn By EC/KK/JM
Checked By BB
Job No. 97005
Date 1/11/99

Revisions:

No. Date By

**BID SET
CONSTRUCTION
DOCUMENTS**
JANUARY 11, 1999

**INTERIOR
ELEVATIONS**
SCALE: AS NOTED
A 5.1

AUBURN LIBRARY

King County Library System
Auburn, Washington

REGISTERED ARCHITECT

STATE OF WASHINGTON

Principal Architect RS
Project Manager MS
Job Captain EC
Drawn By EC/KK/JM
Checked By BB
Job No. 97005
Date 1/11/99

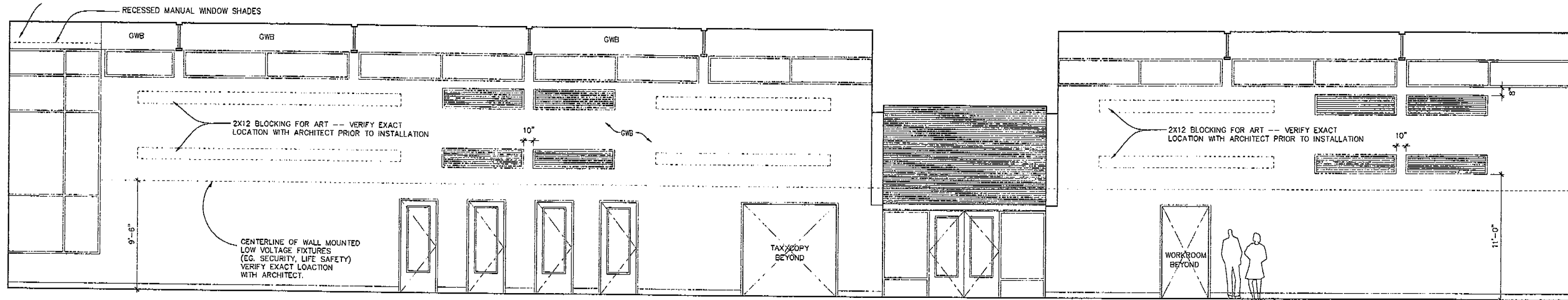
Revisions:
No. Date By

**BID SET
CONSTRUCTION
DOCUMENTS**
JANUARY 11, 1999

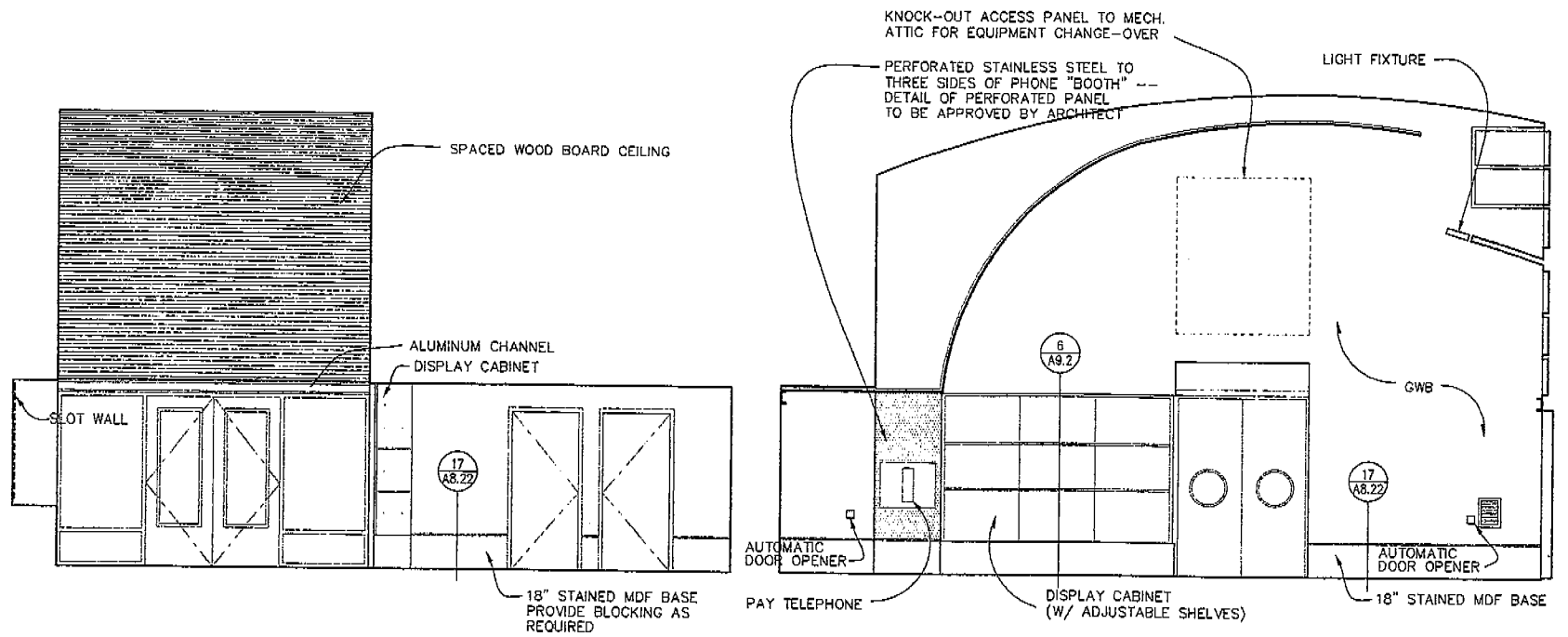
**INTERIOR
ELEVATIONS**

SCALE: AS NOTED

A 5.2

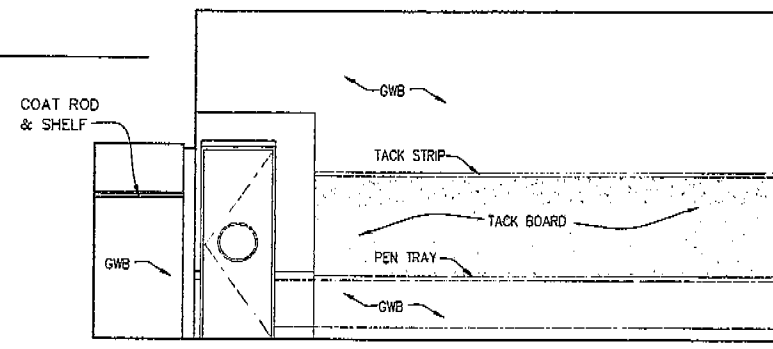


1 COLLECTIONS-SOUTH
Scale: N.T.S.

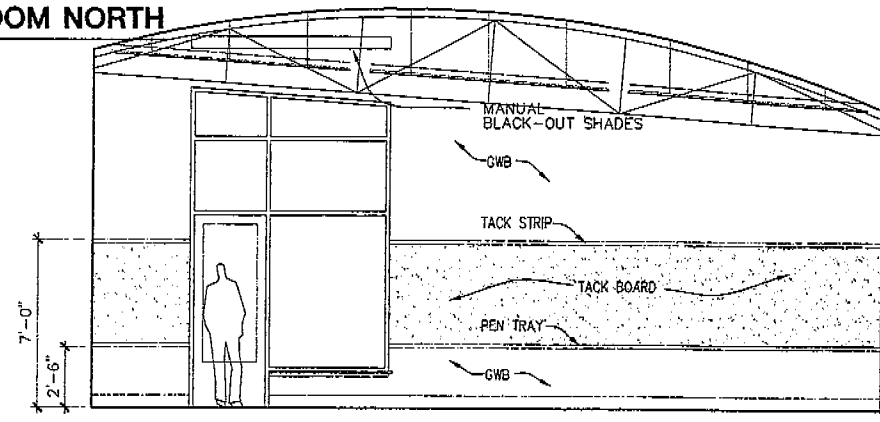


2 LOBBY-NORTH
Scale: 1/4" = 1'-0"

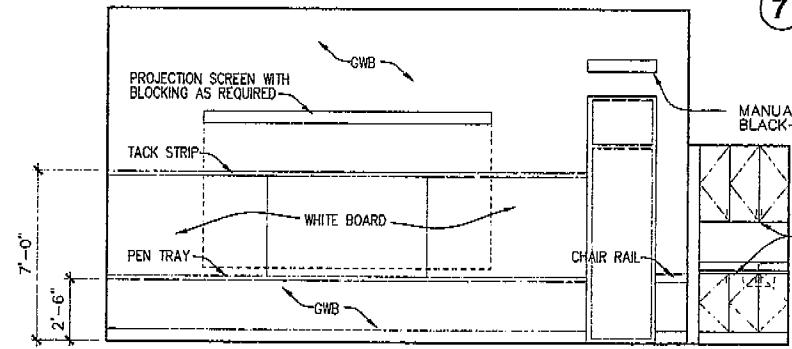
3 LOBBY-EAST
Scale: 1/4" = 1'-0"



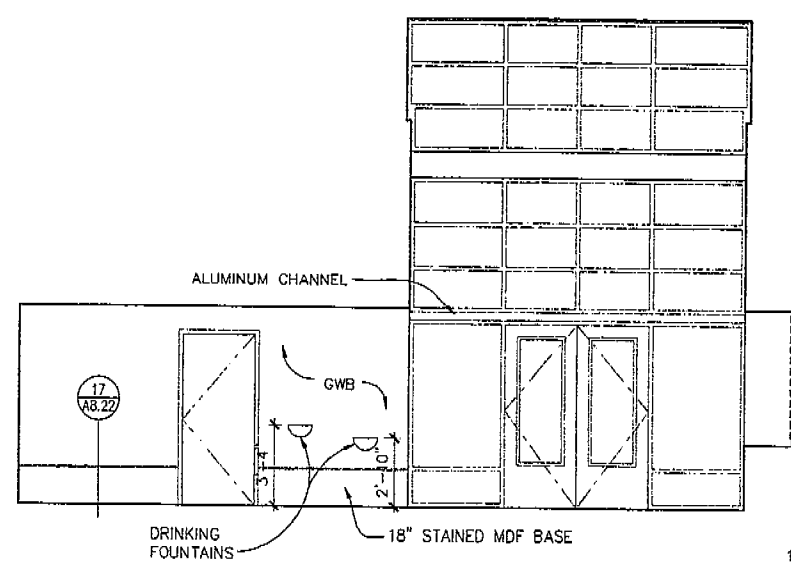
6 MULTI-PURPOSE ROOM NORTH
Scale: 1/4" = 1'-0"



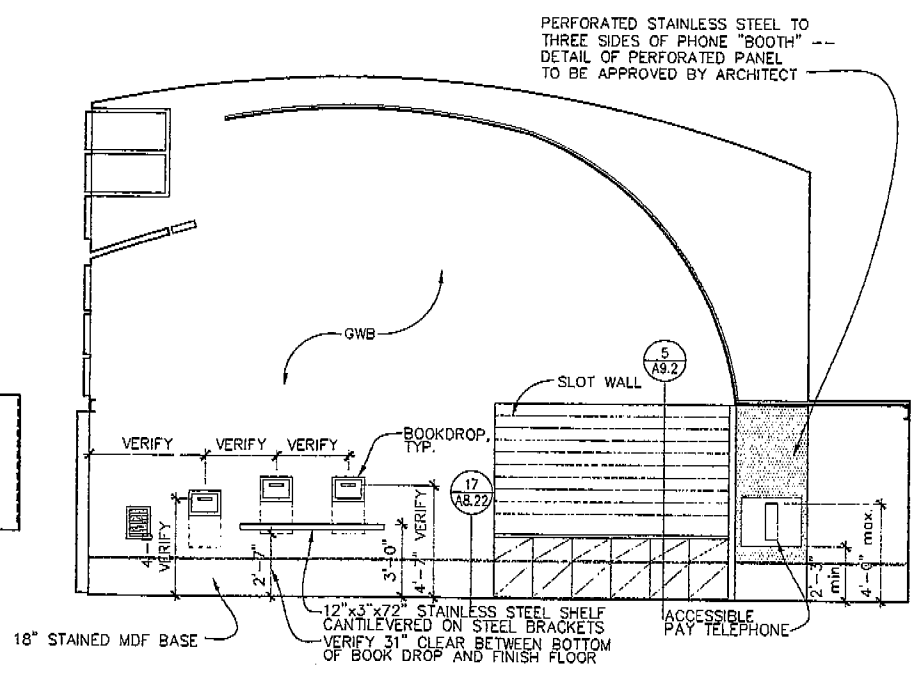
7 MULTI-PURPOSE ROOM EAST
Scale: 1/4" = 1'-0"



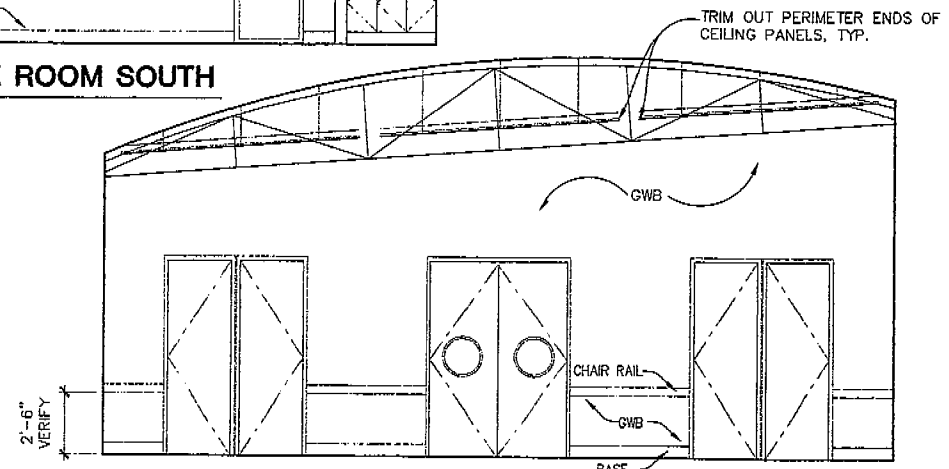
8 MULTI-PURPOSE ROOM SOUTH
Scale: 1/4" = 1'-0"



4 LOBBY-SOUTH
Scale: 1/4" = 1'-0"



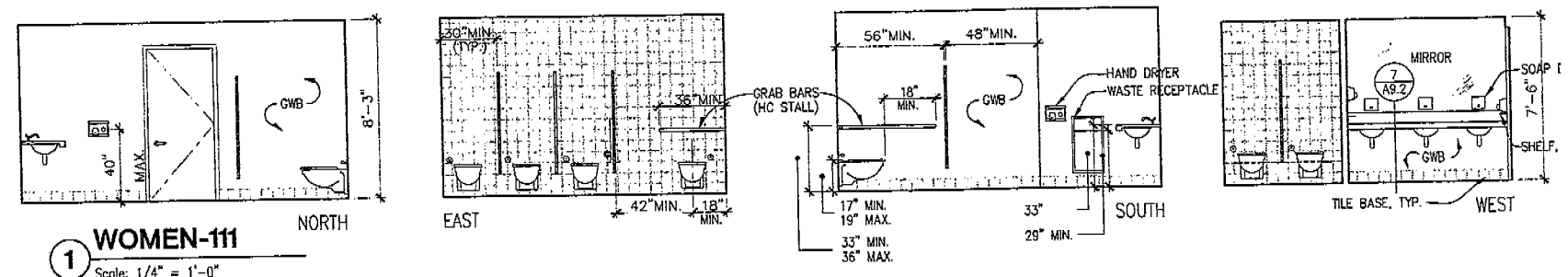
5 LOBBY-WEST
Scale: 1/4" = 1'-0"



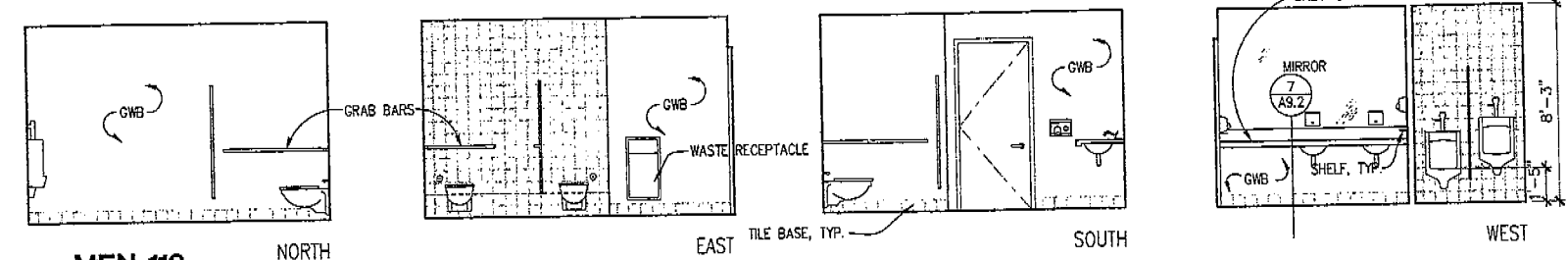
9 MULTI-PURPOSE ROOM WEST
Scale: 1/4" = 1'-0"

AUBURN LIBRARY

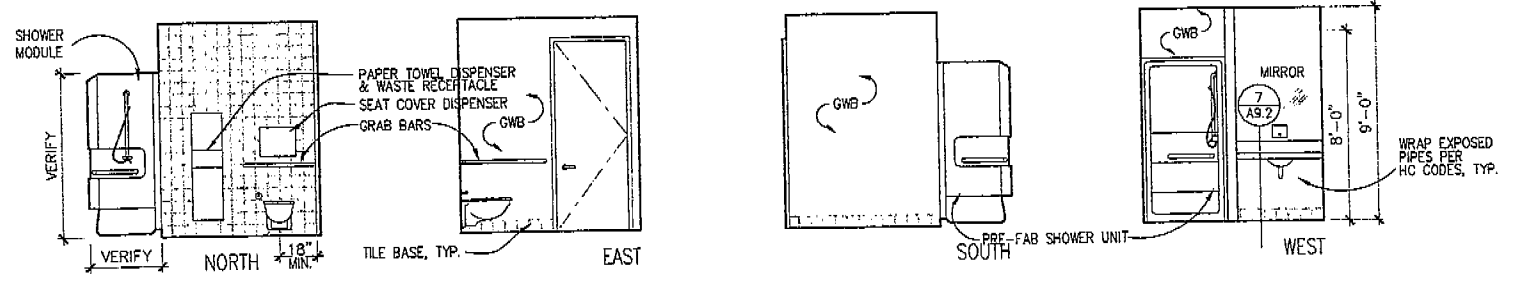
King County Library System
Auburn, Washington



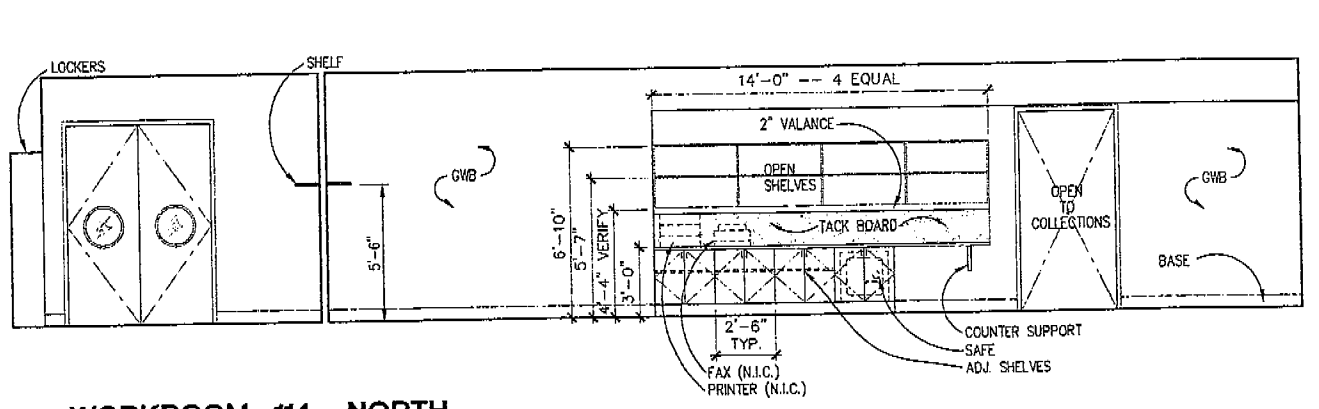
1 WOMEN-111
Scale: 1/4" = 1'-0"



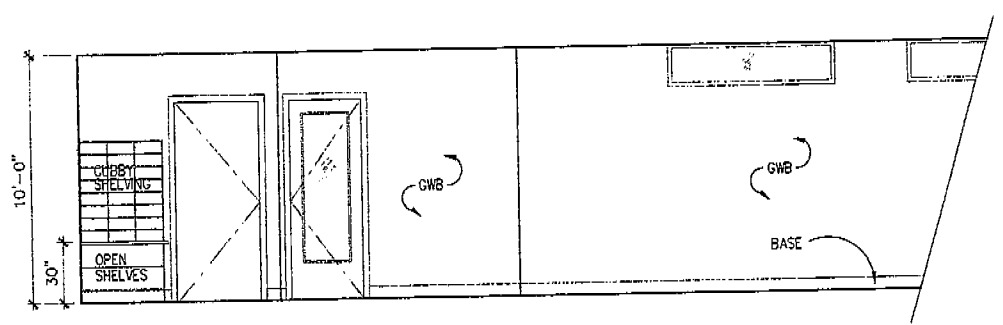
2 MEN-110
Scale: 1/4" = 1'-0"



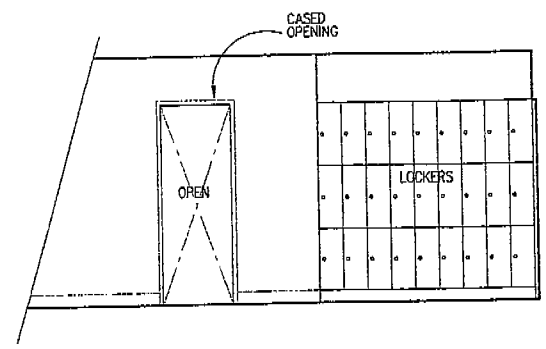
3 BATH - 117
Scale: 1/4" = 1'-0"



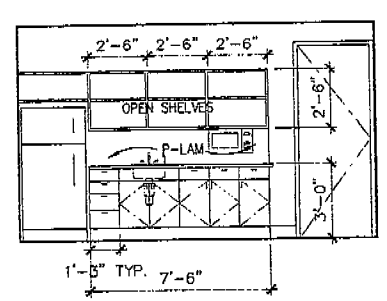
4 WORKROOM 114 - NORTH
Scale: 1/4" = 1'-0"



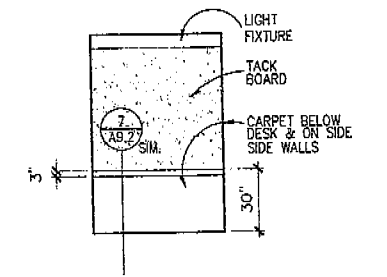
5 WORKROOM 114 - SOUTH
Scale: 1/4" = 1'-0"



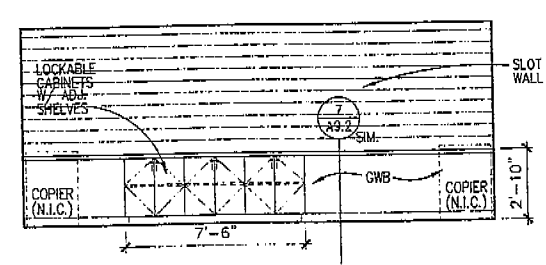
6 WORKROOM 114 - WEST
Scale: 1/4" = 1'-0"



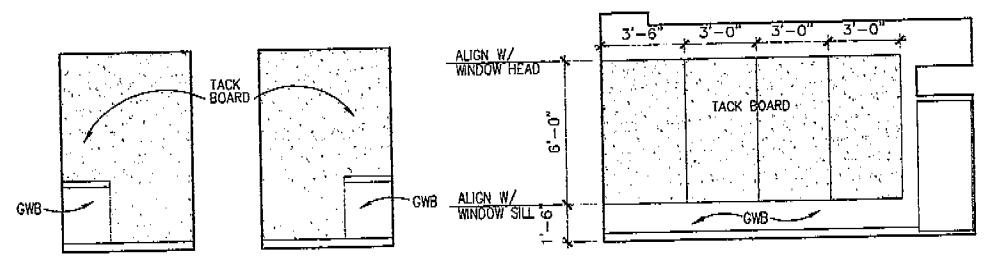
7 LOUNGE - NORTH
Scale: 1/4" = 1'-0"



8 TUTOR (TYP.) - SOUTH
Scale: 1/4" = 1'-0"



9 TAX/COPY - SOUTH
Scale: 1/4" = 1'-0"



10 TAX/COPY - WEST/EAST
Scale: 1/4" = 1'-0"

11 LOUNGE - WEST
Scale: 1/4" = 1'-0"

REGISTERED ARCHITECT
STATE OF WASHINGTON

Principal Architect: RS
Project Manager: MS
Job Captain: EC
Drawn By: EC/KK/JM
Checked By: BB
Job No.: 97005
Date: 1/11/99

Revisions:
No. Date By

BID SET CONSTRUCTION DOCUMENTS
JANUARY 11, 1999

INTERIOR ELEVATIONS
SCALE: 1/8" = 1'-0"
A 5.3