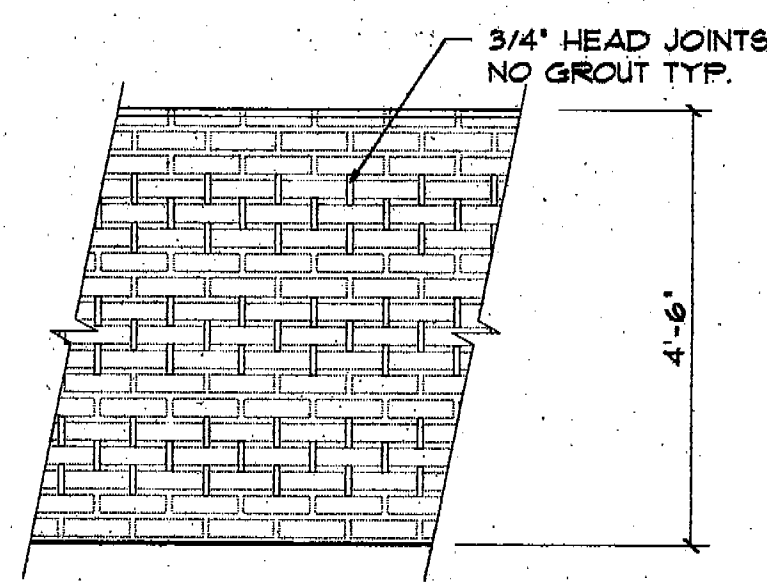
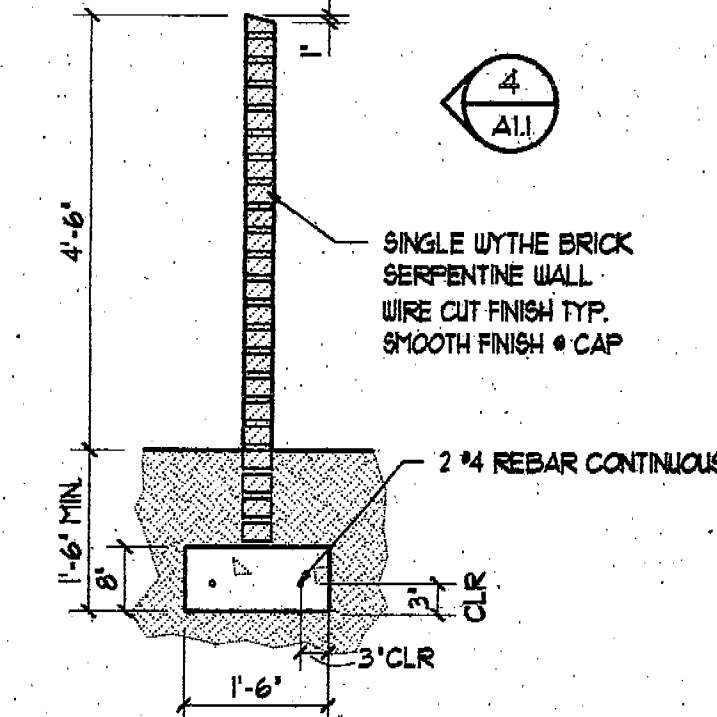


**SITE DATA SUMMARY**

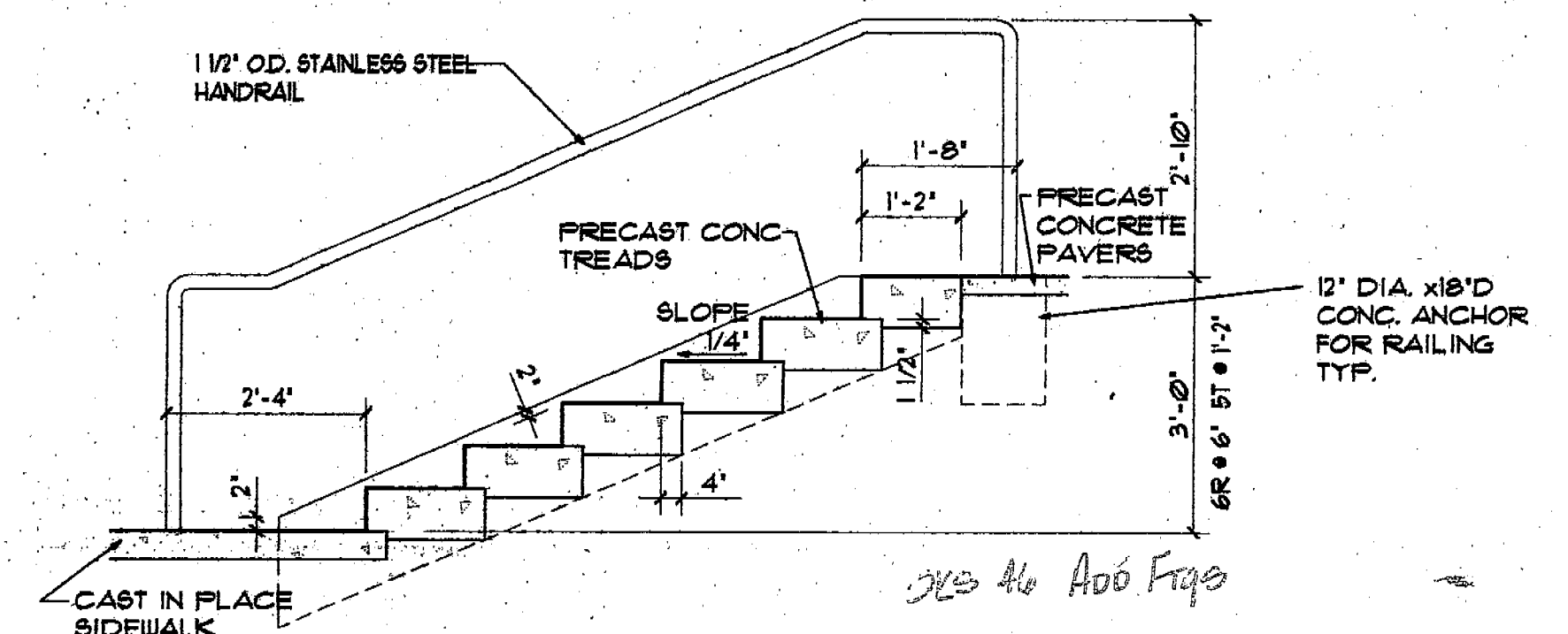
	Allowed/Required	Proposed		Allowed/Required	Proposed
a. Number of Dwelling Units	N.A.	0	h. Parking		
b. Site Area (Includes ROW, Dedicated to City of Bellevue)			Below Grade		
CBD-R		32,754 SF.	Standard (2 HC)	64	Spaces
Sub-District B		33,368 SF.	Compact	53	Spaces
Sub-District A		27,629 SF.	Surface		
Total		159,141 SF.	Standard (2 HC)	34	Spaces
			Compact	50	Spaces
			Total	201	Spaces
c. Area of Proposed Structures (Above Grade)			i. Landscaping (Parking Lot)		
CBD-R	46,371 SF.	46,320 SF.	Street Frontage	5465 SF.	5465 SF.
Sub-District B	unlimited	37,630 SF.	Interior Property Line	125 SF.	1450 SF.
Sub-District A		83,950 SF.	(Along Parking Lot)		
Total			Landscaping/Total	315 SF.	32.5 SF.
			Total	2835 SF.	2369 SF.
d. Floor Area Ratio					
CBD-R	5	5			
Sub-District B	unlimited	35			
e. Lot Coverage		42,000 SF.			
f. Total Coverage With Impervious Surfaces (Excludes Public Streets & Sidewalks)		91,020 SF.			
g. Height From Average Finished Grade					
CBD-R	60'	51'			
Sub-District B	65'	42'			



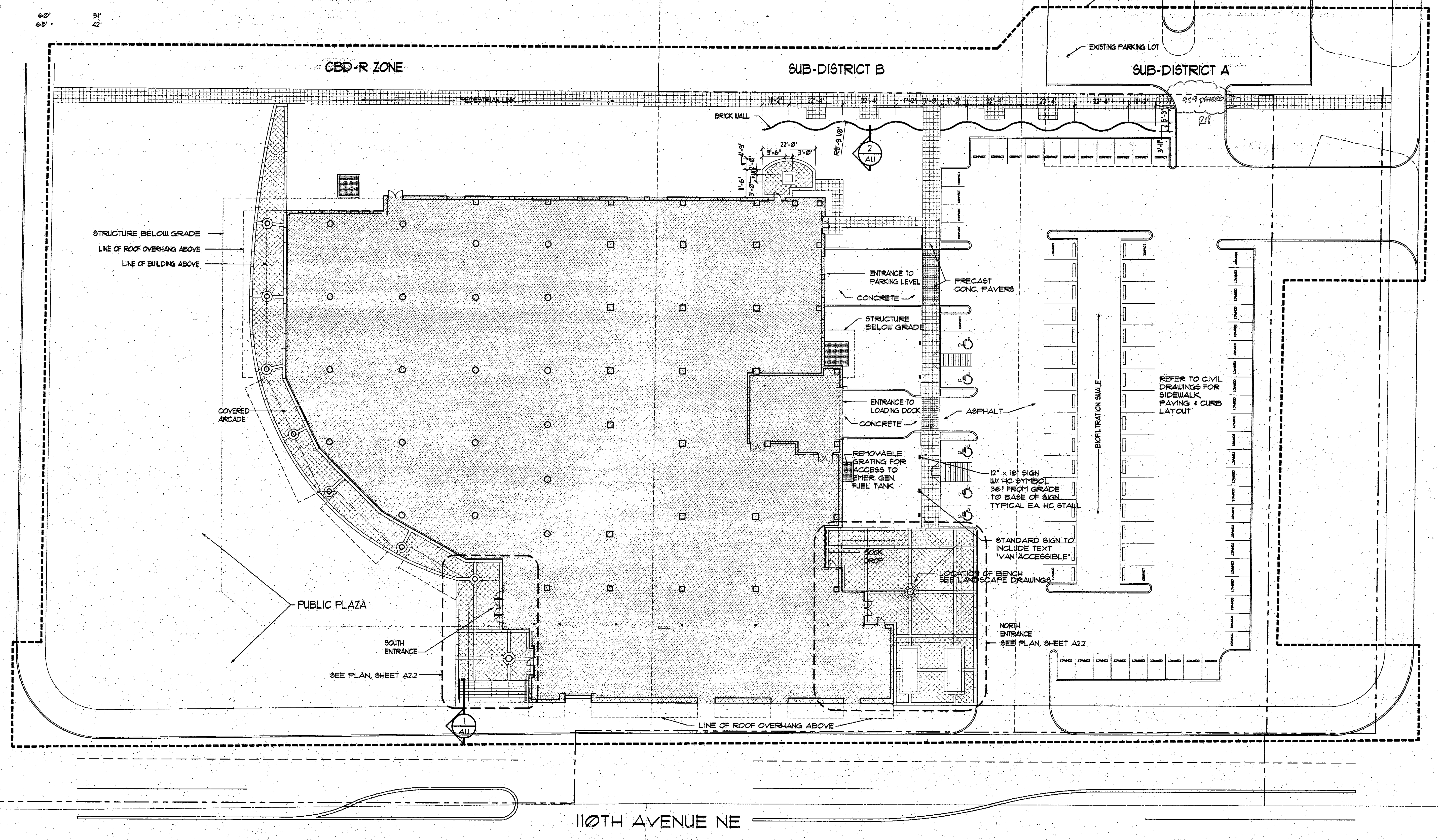
4 PARTIAL ELEVATION, BRICK WALL  
SCALE: 1/2" = 1'-0"



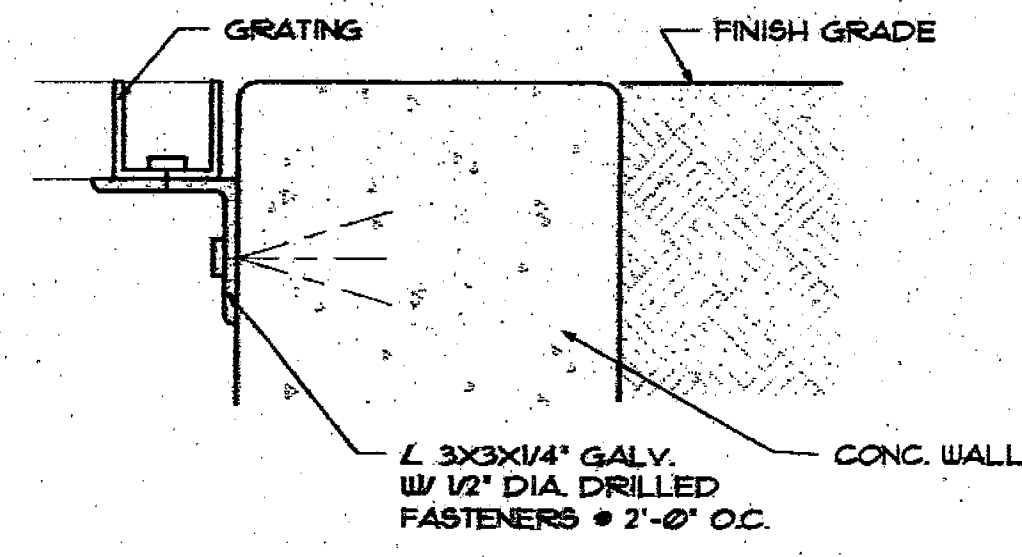
2 SECTION, BRICK WALL  
SCALE: 1/2" = 1'-0"



1 SECTION, STAIR  
SCALE: 1/2" = 1'-0"



3 SITE PLAN  
SCALE: 1" = 20'-0"



5 GRATING DETAIL  
SCALE: 3" = 1'-0"

Date: February 3, 1992  
 Design: Department  
 Professional Department  
 Job: Captain  
 Drawn: By

Revision No.  
 BID SET

Architecture/Planning/Interior Design  
**ZIMMER GUNSUL FRASCA PARTNERSHIP**  
 Newport Beach  
 Seattle  
 Portland

SITE PLAN  
**BELLEVUE LIBRARY**  
 KING COUNTY LIBRARY SYSTEM  
 1111 110TH AVENUE NORTHEAST

6308 REGISTERED ARCHITECT  
 DANIEL J. HUBERTS  
 STATE OF WASHINGTON

Job No. 4250-05

A1.1  
 of Sheets