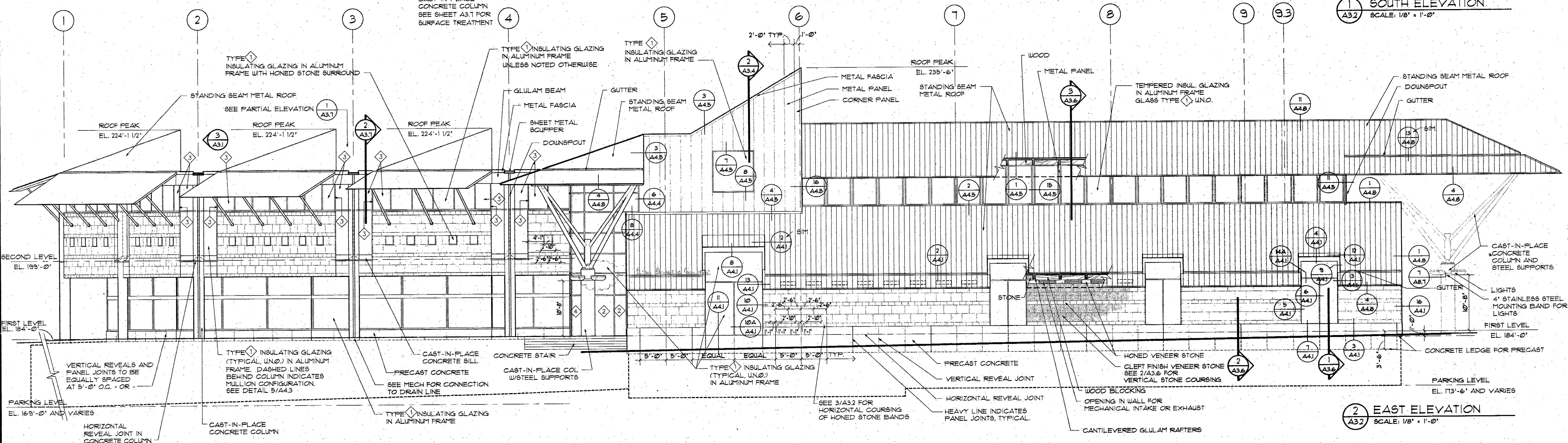
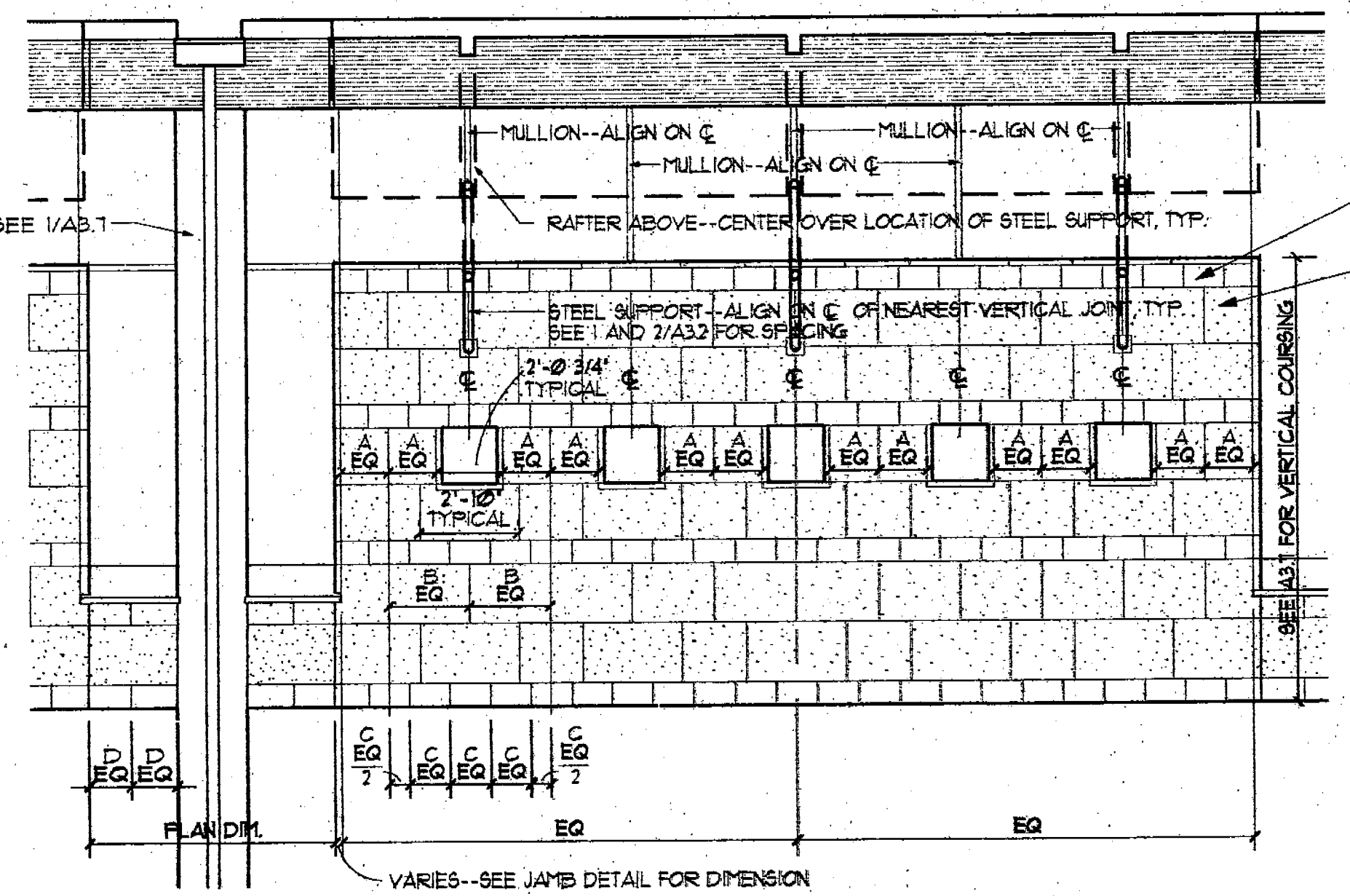


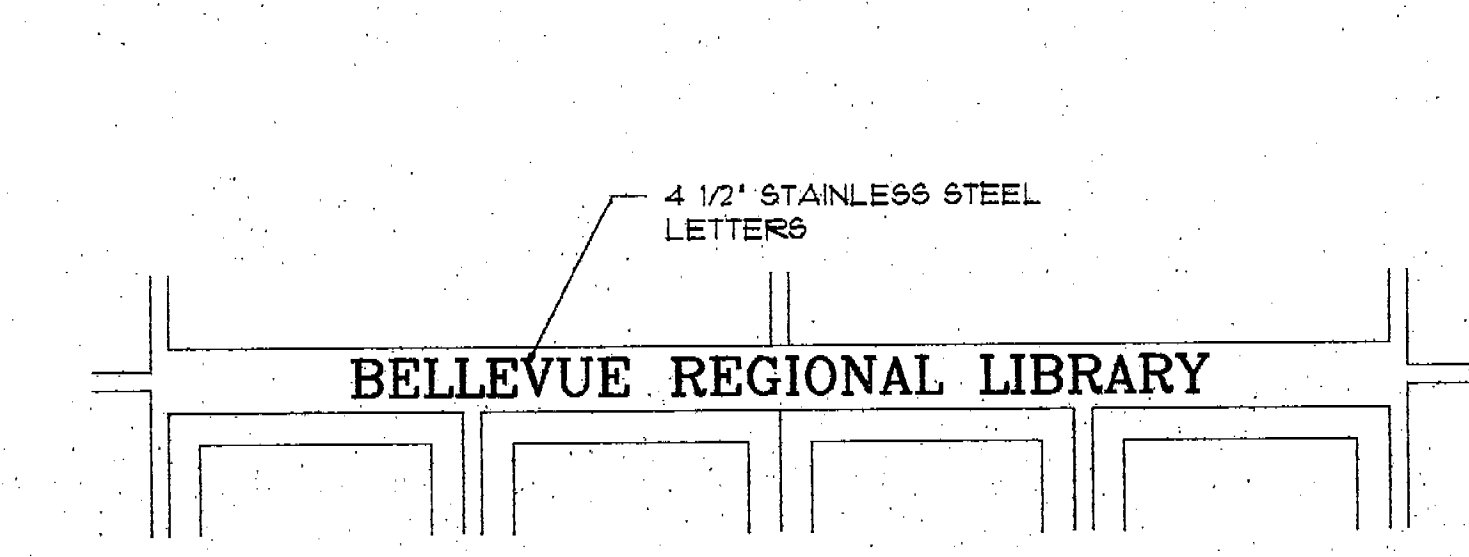
1 SOUTH ELEVATION
SCALE: 1/8" = 1'-0"



2 EAST ELEVATION
SCALE: 1/8" = 1'-0"



3 PARTIAL ELEVATION--STONE PATTERN
SCALE: 1/4" = 1'-0"



4 SIGNAGE ELEVATION
SCALE: 1/8" = 1'-0"

DIMENSION NOTES
 1) HORIZONTAL STONE COURSING DIMENSIONS ARE TO CENTERLINE OF 3/8" JOINTS
 2) DIMENSIONS NOTED AS TYPICAL ARE TO APPLY TO ALL SIMILAR BAYS OF THE SOUTH AND EAST WALLS. DIMENSIONS NOTED "EQ" WILL VARY FOR EACH BAY.
 3) SEE FULL ELEVATIONS FOR NUMBER OF SMALL WINDOWS EACH BAY.

GENERAL NOTES

1. ALL EXPOSED STRUCTURAL STEEL AT EXTERIOR TO BE COATED WITH 1/4" INTUMESCENT MASTIC (1 HR. UL. DESIGN XR-207). REQUIRES SPECIAL INSPECTION DURING APPLICATION. SEE STRUCTURAL DOCUMENTS FOR LOCATIONS AT WOOD CONNECTIONS.

GLAZING SCHEDULE

EXTERIOR GLASS		INTERIOR GLASS	
TYPE	GLASS DESCRIPTION	TYPE	GLASS DESCRIPTION
1	1" INSULATING LOW-E GLASS	10	1/4" CLEAR WIRE GLASS
2	1" INSULATING LOW-E TEMPERED (BOTH SIDES) GLASS	11	1/4" CLEAR LAMINATED CERAMIC 1-HR. RATED GLASS
3	3/8" TINTED GLASS	12	1/4" CLEAR GLASS
4	3/8" TINTED TEMPERED GLASS	13	1/4" OBSCURE WIRE GLASS
		14	1/4" MIRROR

Date: FEBRUARY 3, 1992
 Design Department: Technical Department
 Job: Drgstin
 Drawn: By:

Revision No. BID SET
 SCALE: 1/8" = 1'-0"
 Architectural/Planning/Interior Design
ZIMMER-GUNSLU-FRASCIA PARTNERSHIP
 Newport Beach
 Seattle

ELEVATIONS, SOUTH & EAST
BELLEVUE LIBRARY
 KING COUNTY LIBRARY SYSTEM
 1111 110TH AVENUE NORTHEAST

Job No. 4830-05
A3.2
 Sheets