

# Installing OverDrive Console on your Computer\*

\*cannot be installed on library computers.

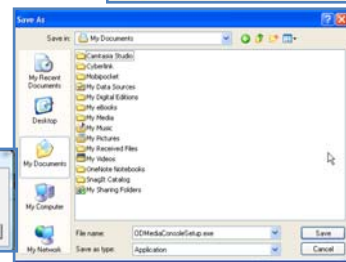
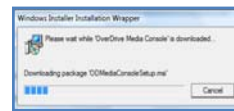
1. Click **DOWNLOADS** Downloads from the main KCLS website.
2. Click **Overdrive:** Overdrive for the type of collection you wish to use. On the left side of the screen, you will see links for help with each of the OverDrive formats.
3. Click any of the **OverDrive** links on the **left of the screen** for the collection you need help with. At the top of each of the help page will be a link for downloading the console.
4. Click **Click to download OverDrive Media Console™**. Note: You only have to download this console *one time*. It will work with all of the media formats provided by OverDrive. **Note:** If you are using **Zune®** player, you will have an additional program to download.



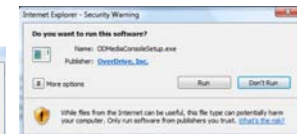
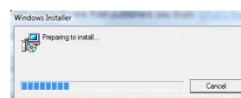
5. Select which type of computer you have **MAC** or **Windows**.
6. Click **OverDrive Media Console**. The File Download Security Warning Dialog box will open.




7. Click **Save** **Save**. Note: if **Run** is available and you have a fast connection to the Internet, you can select that option instead of Save.
8. Note the location of the file so you can find it again to run the installation. Click **Save** **Save**. You will see the download status, if you have that set to display on your computer.



9. Locate the file you have saved. Double-click **ODMediaConsoleSetup.exe**



**ODMediaConsoleSetup.exe**. (.pkg for MAC – follow the instructions on your screen) – follow the instructions on your screen)  
**Note: The remainder of these instructions are written for Windows.**

10. Click  **Run**. You will see the “Preparing to install” status. The OverDrive Media Console Wizard will start.


11. Click  **Next** to begin the wizard.


12. Select “**I Accept**” after reviewing the License Agreement.

13. Click  **Next**.

14. Select the installation folder, you can change the location, but it is best to keep with the default.

15. Select if this program will be available to everyone using your computer or just you.

16. Click  **Next**.

17. Click  **Next** to confirm installation. You will then see installation status window.

18. Once the installation is complete, click  **Close**.

