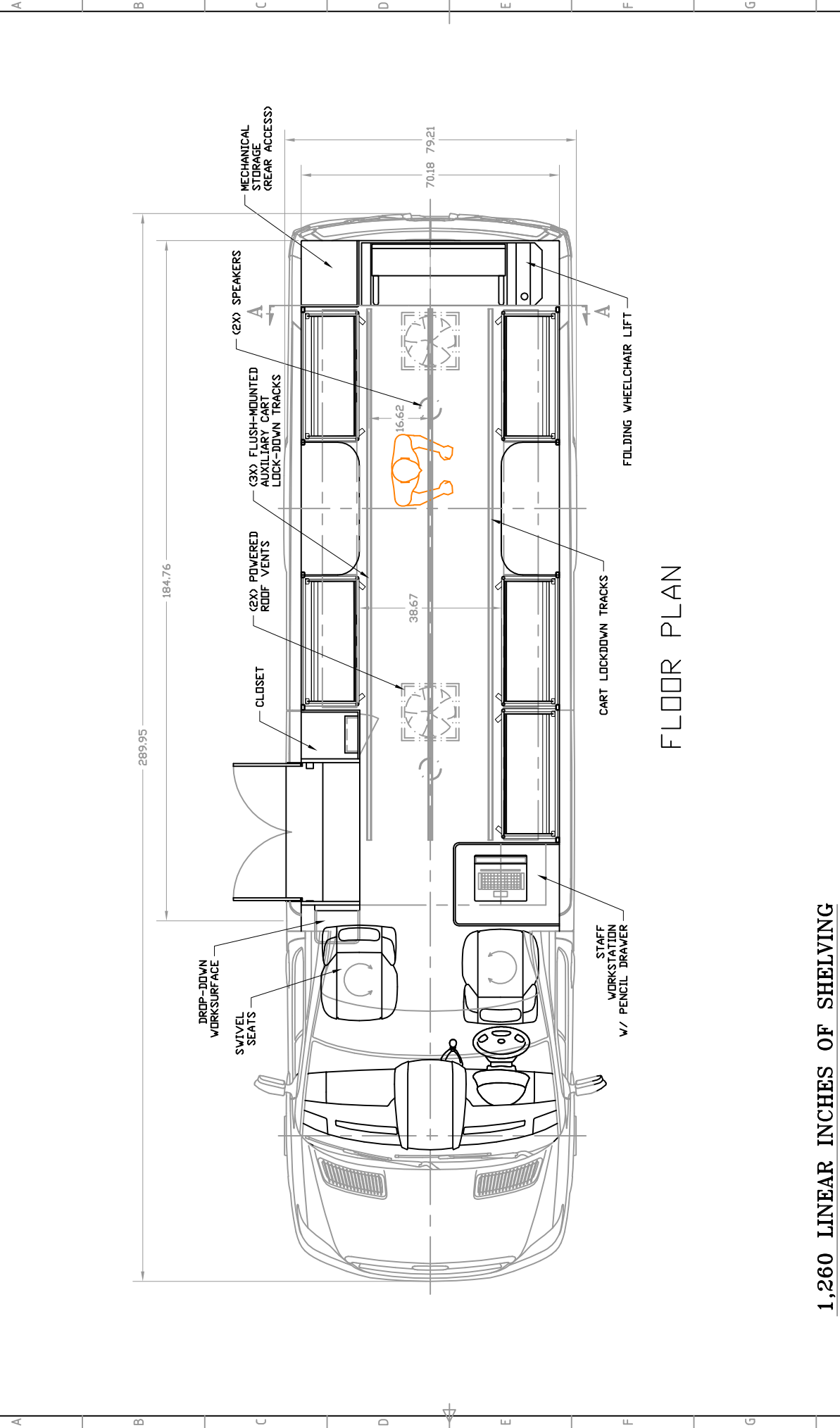


RevNo	Revision note	Date	Signature	Checked
1	Desk height, track placement, brochure rack	15-May-09		



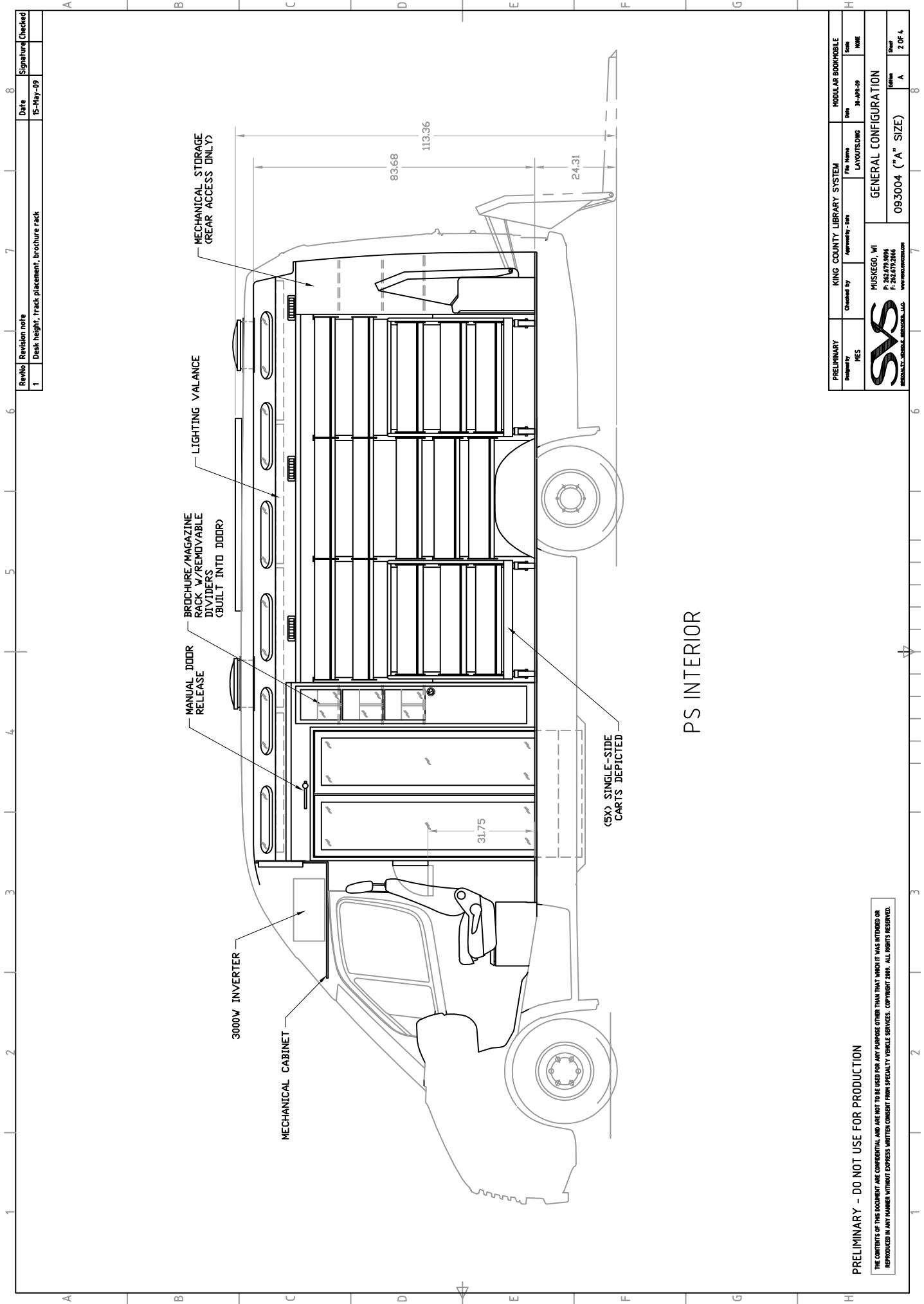
# FLOOR PLAN

## 1,260 LINEAR INCHES OF SHELVING

PRELIMINARY - DO NOT USE FOR PRODUCTION

THE CONTENTS OF THIS DOCUMENT ARE CONFIDENTIAL AND ARE NOT TO BE USED FOR ANY PURPOSE OTHER THAN THAT WHICH IT WAS INTENDED OR REPRODUCED IN ANY MANNER WITHOUT EXPRESS WRITTEN CONSENT FROM SPECIALTY VEHICLE SERVICES. COPYRIGHT 2009. ALL RIGHTS RESERVED.

PRELIMINARY	KING COUNTY LIBRARY SYSTEM	MODULAR BOOKMOBILE
Designed by MES	Approved by - Date LAWRENCE	Date 31-APR-09
Checked by MES	File Name LAWRENCE	Scale NONE
GENERAL CONFIGURATION		
MUSKEGO, WI 222 S. WISCONSIN F: 262.778.2088 www.kingcountylib.org		
093004 (1" A" SIZE)		Sheet A
		1 OF 4



PS INTERIOR

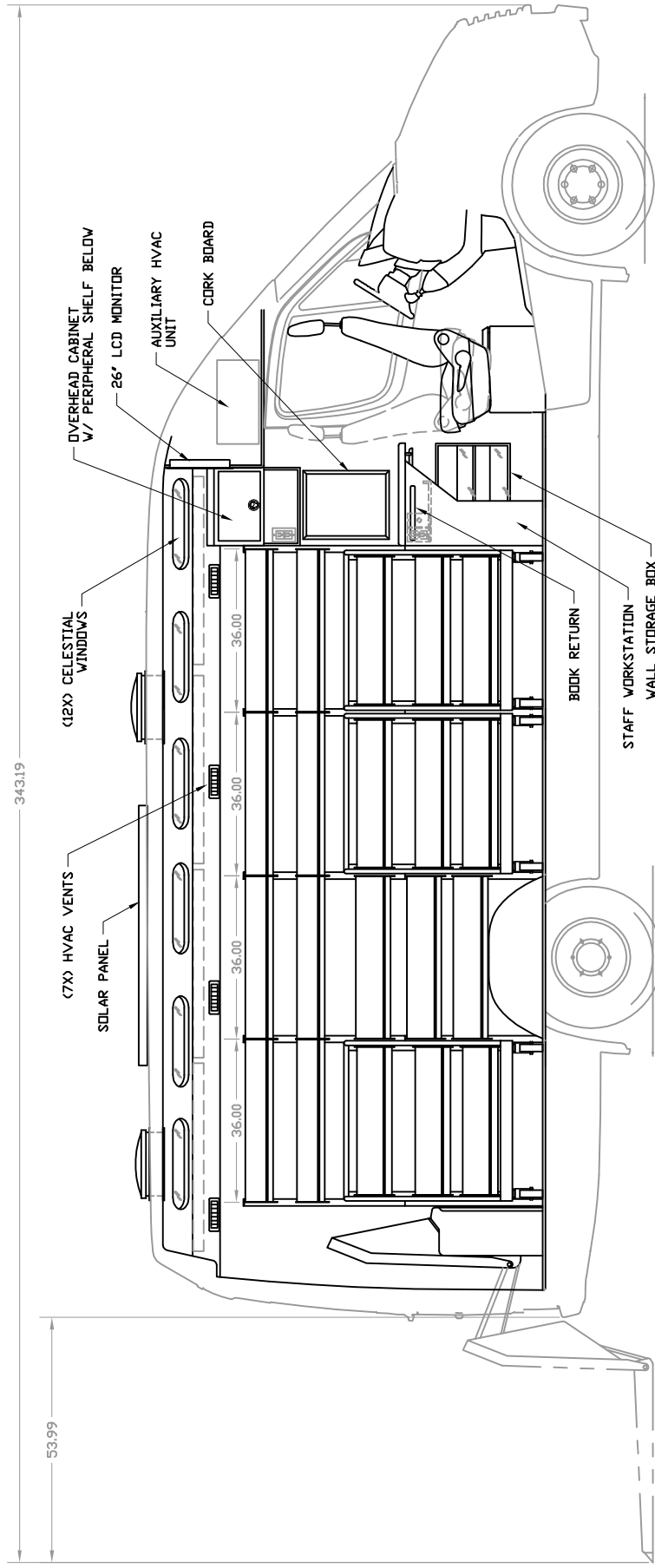
RevNo	Revision note	Date	Signature	Checked
1	Desk height, track placement, brochure rack	15-May-09		

PRELIMINARY	KING COUNTY LIBRARY SYSTEM	MODULAR BOOKMOBILE
Designed by HES	Checked by Approved by - Date File Name LAYOUTS/DWG	Date 31-JRP-09 Scale NONE
<b>SYS</b>		
MUSKOGEE, WI P. 262.879.2246 F. 262.879.2248 WWW.KINGCOUNTYLIBRARYSYSTEM.COM		
GENERAL CONFIGURATION		
093004 ("A" SIZE)		
		Sheet A
		2 OF 4

**PRELIMINARY - DO NOT USE FOR PRODUCTION**

THE CONTENTS OF THIS DOCUMENT ARE CONFIDENTIAL AND ARE NOT TO BE USED FOR ANY PURPOSE OTHER THAN THAT WHICH IT WAS INTENDED OR REPRODUCED IN ANY MANNER WITHOUT EXPRESS WRITTEN CONSENT FROM SPECIALTY VEHICLE SERVICES. COPYRIGHT 2009. ALL RIGHTS RESERVED.

RevNo	Revision note	Date	Signature	Checked
1	Desk height, track placement, brochure rack	15-May-09		

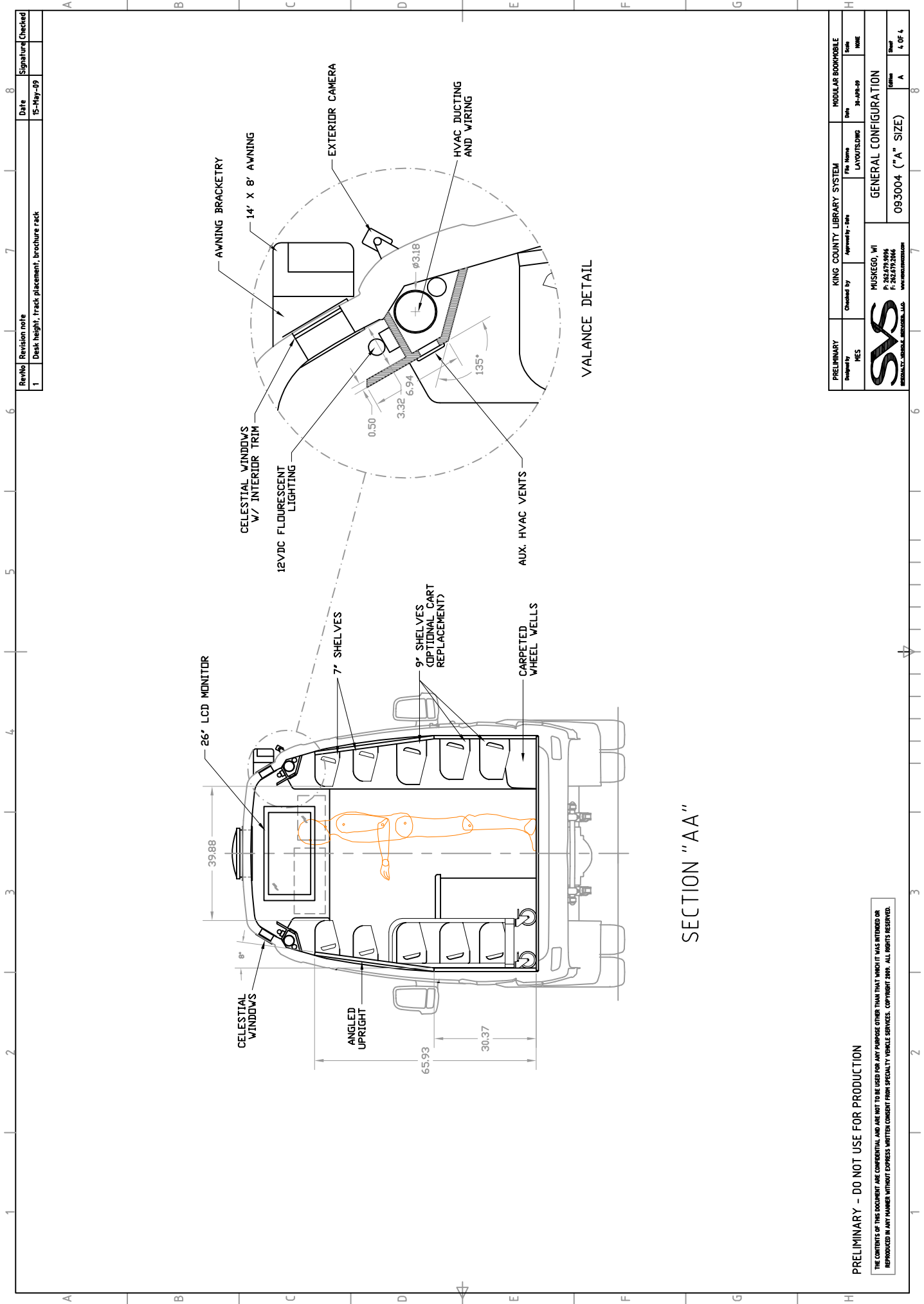


DS INTERIOR

PRELIMINARY - DO NOT USE FOR PRODUCTION

THE CONTENTS OF THIS DOCUMENT ARE CONFIDENTIAL AND ARE NOT TO BE USED FOR ANY PURPOSE OTHER THAN THAT WHICH IT WAS INTENDED OR REPRODUCED IN ANY MANNER WITHOUT EXPRESS WRITTEN CONSENT FROM SPECIALTY VEHICLE SERVICES. COPYRIGHT 2009. ALL RIGHTS RESERVED.

PRELIMINARY	KING COUNTY LIBRARY SYSTEM	MODULAR BOOKMOBILE
Designed by HES	File Name LAYOUTS/DWG	Date 31-APR-09
Checked by	Approved by - Date	Scale NONE
GENERAL CONFIGURATION		
MUSKOGEE, WI		
P: 262.879.2246		
WWW.VESSELDESIGN.COM		
093004 ("A" SIZE)		
		Sheet 3 OF 4



SECTION "AA"

VALANCE DETAIL

RevNo	Revision note	Date	Signature	Checked
1	Desk height, track placement, brochure rack	15-May-09		

PRELIMINARY	KING COUNTY LIBRARY SYSTEM	MODULAR BOOKMOBILE
Designed by NES	Checked by Approved by - Date File Name LAYOUTS/DWG 31-APR-09	Date Scale NONE
<b>SYS</b> SERVICES, INC. • 10000 15TH AVENUE, S.E. • BELLEVUE, WA 98006		
GENERAL CONFIGURATION		
093004 ("A" SIZE)		
		Sheet 4 OF 4

PRELIMINARY - DO NOT USE FOR PRODUCTION

THE CONTENTS OF THIS DOCUMENT ARE CONFIDENTIAL AND ARE NOT TO BE USED FOR ANY PURPOSE OTHER THAN THAT WHICH IT WAS INTENDED OR REPRODUCED IN ANY MANNER WITHOUT EXPRESS WRITTEN CONSENT FROM SPECIALTY VEHICLE SERVICES. COPYRIGHT 2009. ALL RIGHTS RESERVED.